



The *Experts* in Oracle ProjectsSM

Integrating Oracle Project Management 11.5.10 M with External Scheduling Tools

Presented by
Sam Uttarwar
Principal Consultant

About Project Partners, LLC

- Founded in 1997 by former chief architect of Oracle Projects
- Former Oracle developers, consultants, support technicians and product marketing personnel
-  
- 175+ successful customers
- Expert services
- Products to extend Oracle's solution



Our Services

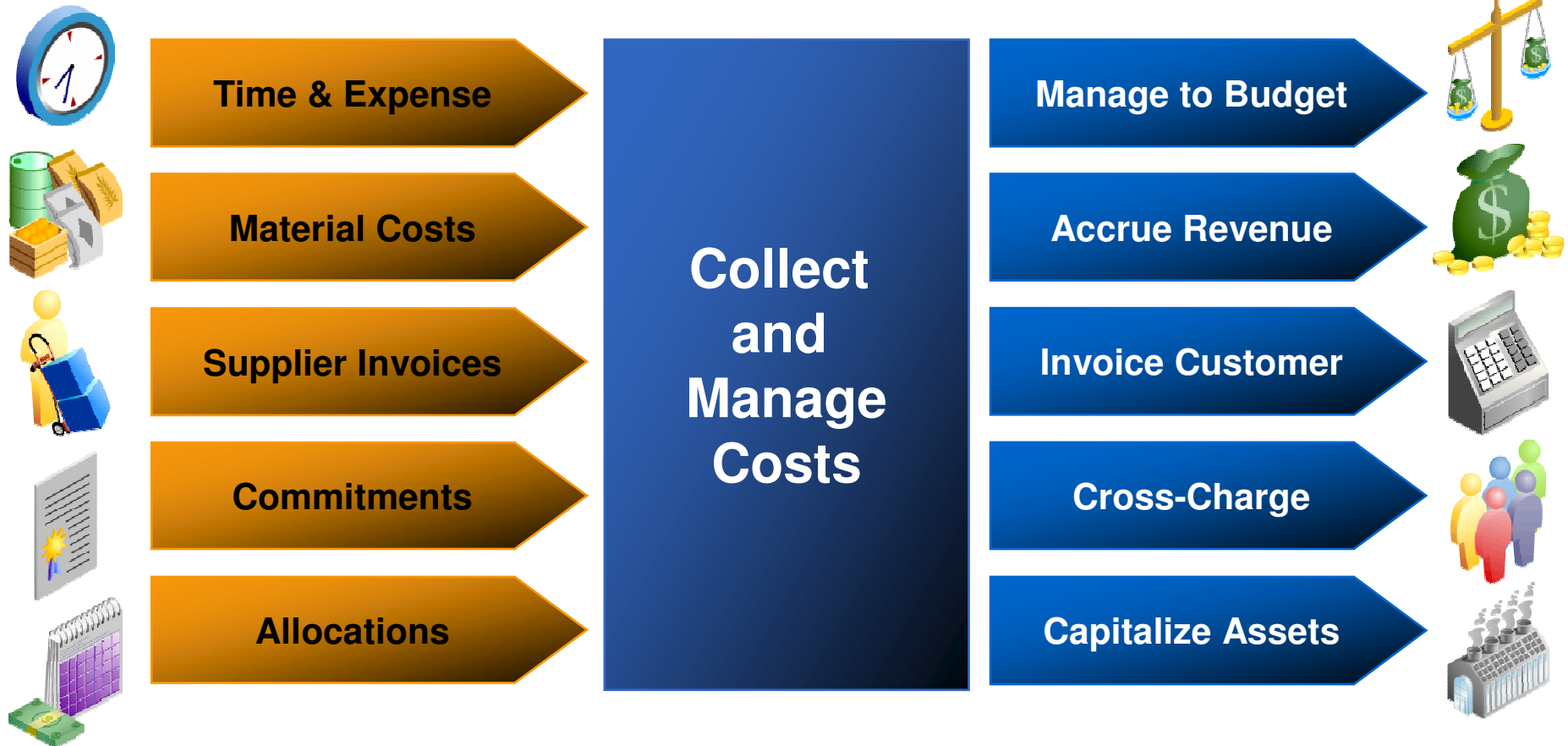
- Implementation
 - Full Projects Suite
 - Financials & Projects
- Extensions
 - Library of proven successes for E&C, Govt Contractors, Prof Services industries
- Conversions
- Upgrades
- Training
- Premium Support

Our Products

- OP³
 - Pre-packaged bi-directional integration between Primavera and Oracle Projects
 - Used by USACE, Iraq PCO, Bollinger Shipyards and more....

- Project Information Center (PIC)
 - Custom Dashboards and Reporting
 - Invoice Consolidation and Printing
 - Used by MasterCard, KCI, DAI, ASRC, Abt Associates and more...

Oracle Projects...From Project Accounting..



... To Enterprise Project Management

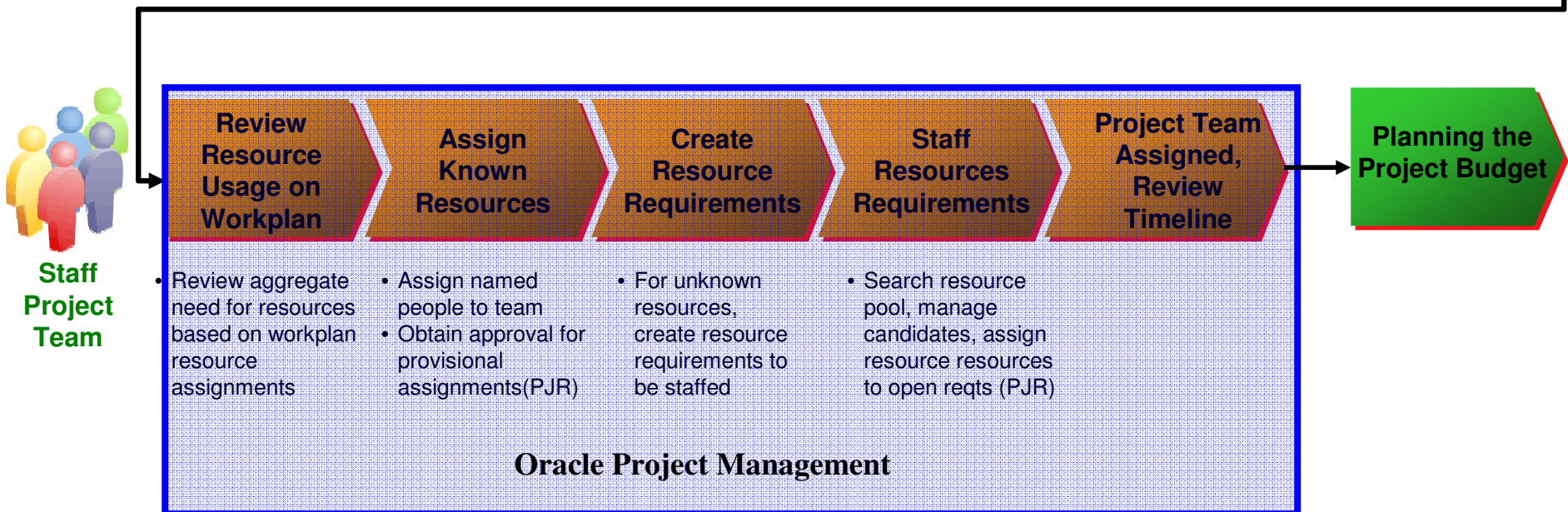
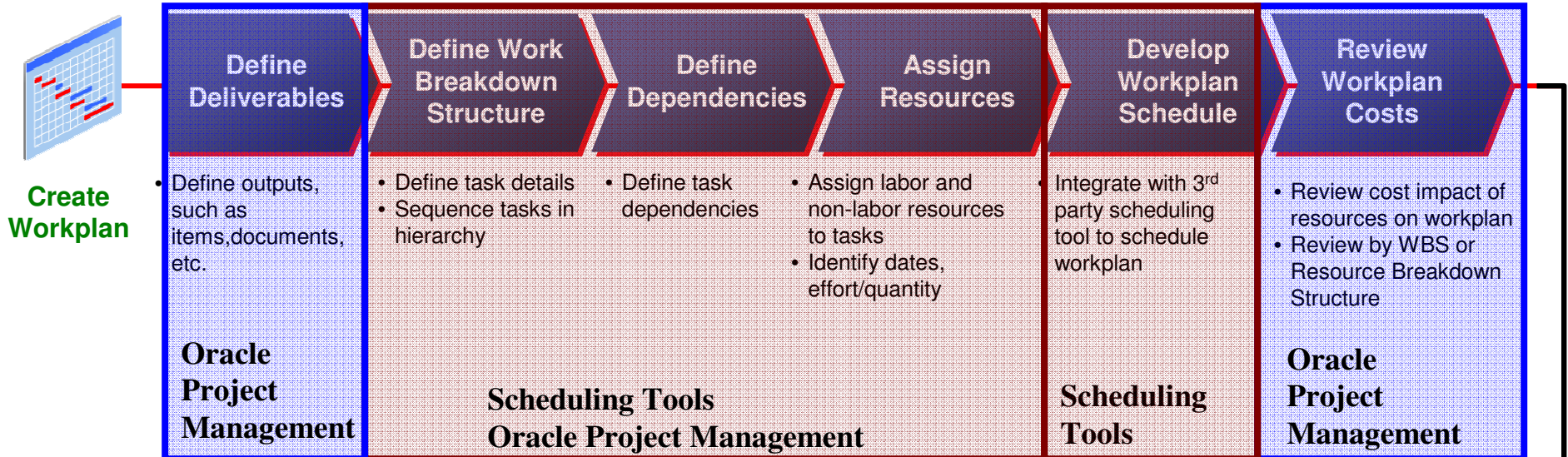
- with 11.5.10 M

- Oracle Projects Family Pack M (11.5.10.M)
 - Released May 2005
 - Brings Projects into the Front Office
 - Completely new functionality in HTML UI
 - Used by Project Managers and Team Members
 - Planning – Workplan, B&F, Staffing Plans
 - Execution – Issue & Change Management, Progress
 - Monitor – Project Performance, Exceptions, Status
 - Organizational – Portfolio Analysis

Integration with 3rd party scheduling tools

- Why integration?
 - Most organizations use tools like MS Project and Primavera for scheduling
 - Oracle Projects does not support native scheduling.
 - Objective: Protect investment in scheduling tools while exploiting the power of Oracle ERP
- So where do the scheduling tools fit in the project planning and execution process?

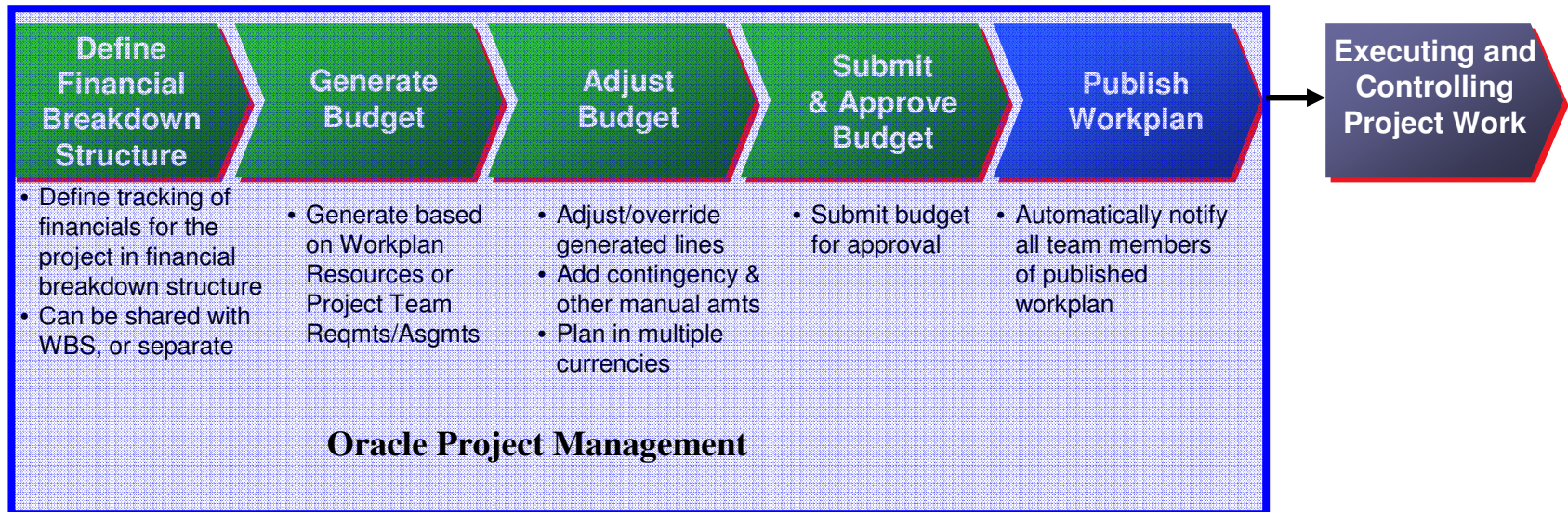
Planning the Project Work



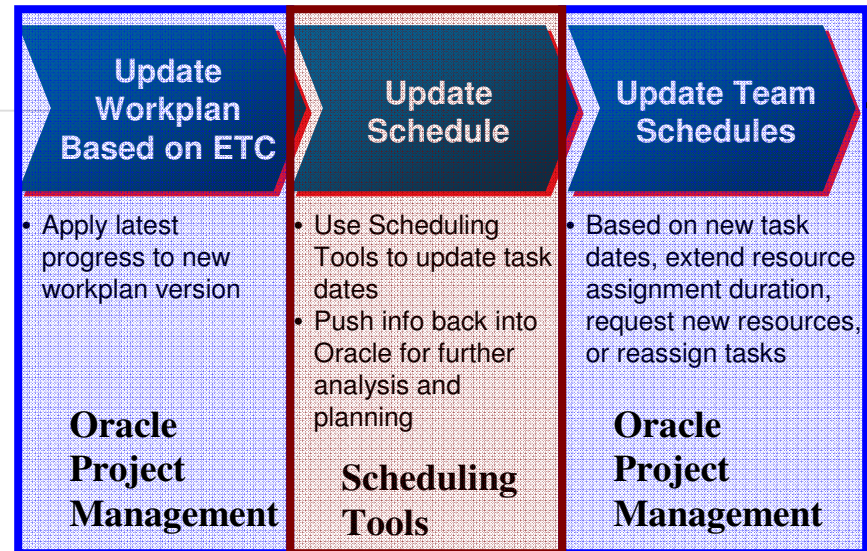
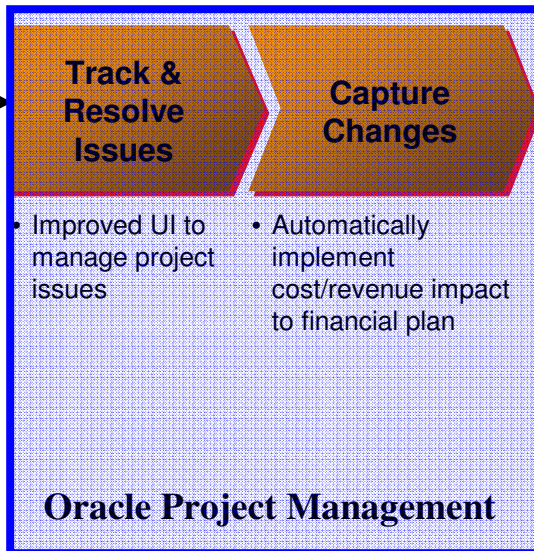
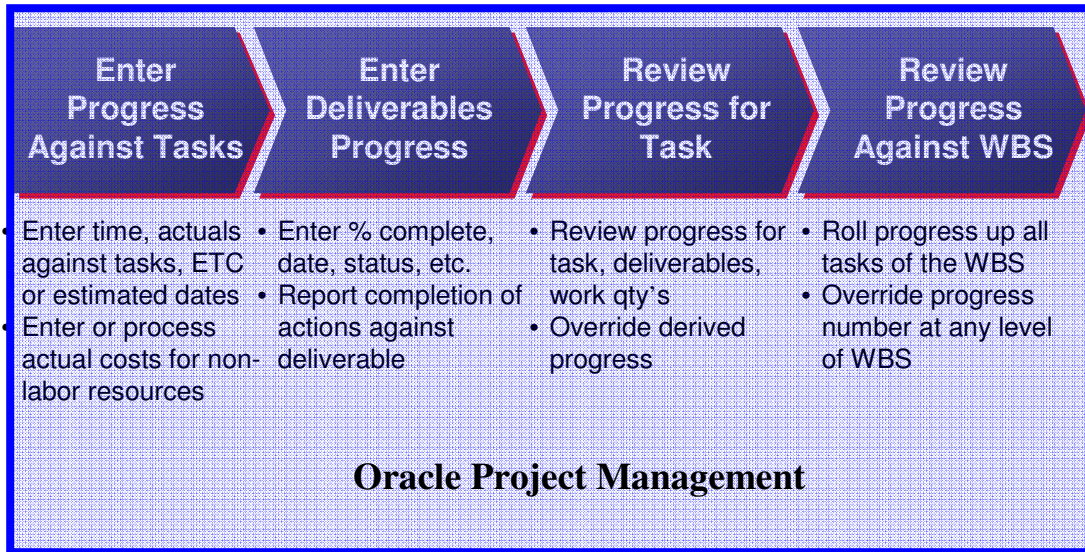
Creating the Project Budget



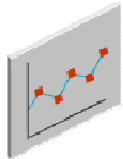
Create Budget



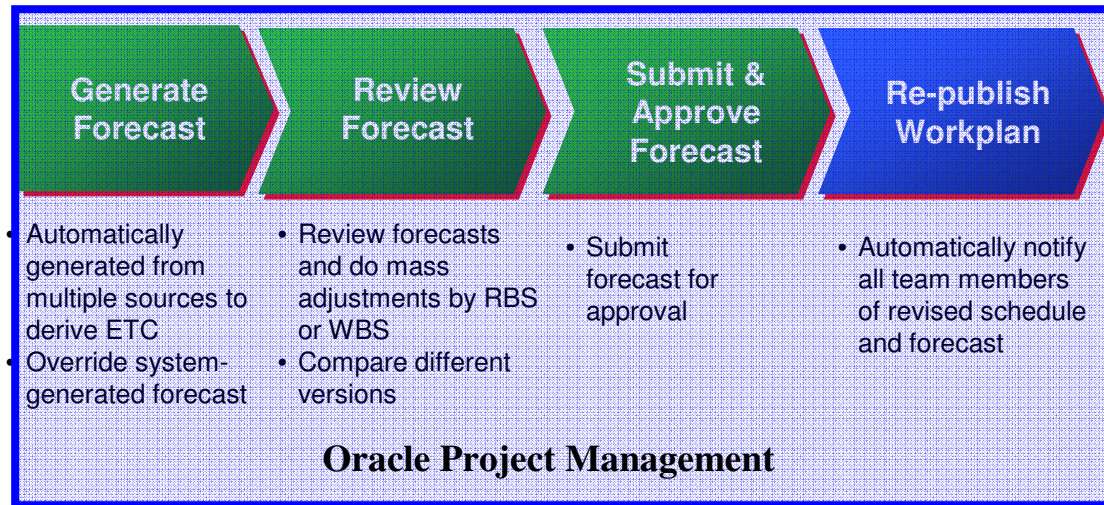
Executing & Controlling the Project Work



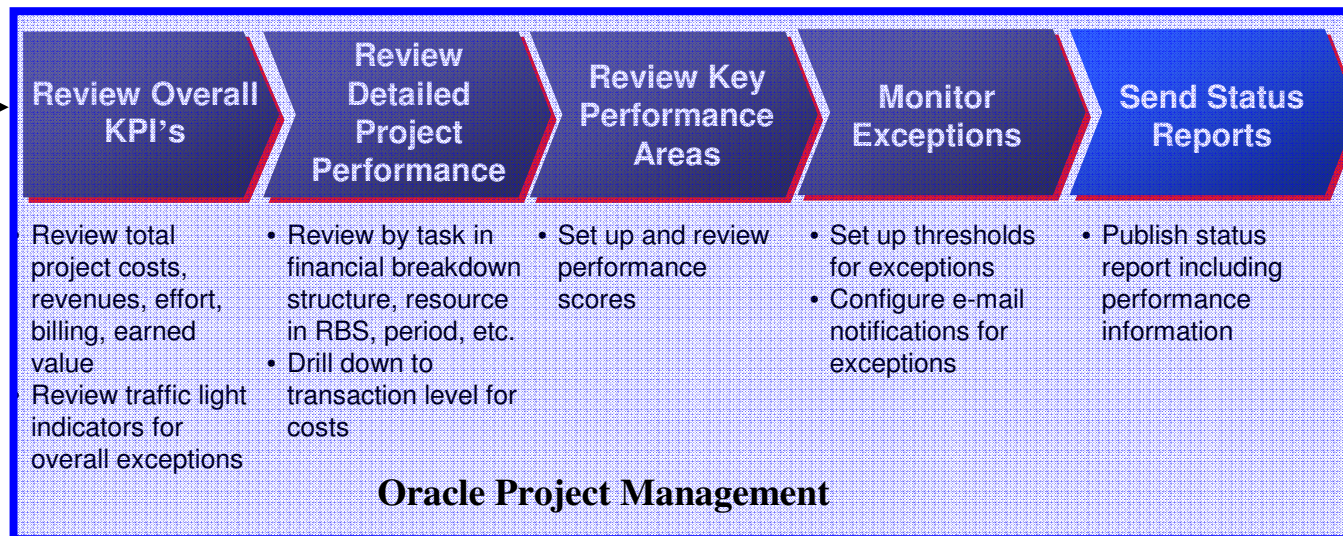
Creating and Updating the Forecast and Managing the Project Performance



Create & Update Forecast



Monitor Performance



Integration with 3rd Party Scheduling Tools

- Integration with Microsoft Project
 - Available from Oracle, bundled with 11.5.11 M
 - Integration with desktop (standard) version only
 - Easy to install and configure
 - Versions supported: 2000/2002/2003
- Integration with Primavera Project Planner
 - Available from Project Partners as a pre-packaged product, OP³
 - Integration with Enterprise version, running on Oracle db
 - Easy to install and configure
 - Versions supported: P3e and P3e/c 4.1 and 5.0

Integration with Microsoft Project – Integration Points

- Planning Resources
- Projects
- Work Breakdown Structures
- Activity Resource Assignments
- Financial Plans
- Actuals

Integration with Microsoft Project - Workplans

- Planning phase: Bi-directional Integration with workplans
 - Planning the Project in MS Project
 - Receive planning resource list from Oracle Projects
 - Build project plan with resources received from Oracle Projects
 - Schedule project plan
 - Send the scheduled project to Oracle Project
 - Update the project plan in either application and receive in the other to keep the two projects in synch
 - Attach the desktop project file (.mpp) to project in Oracle (optional)

Integration with Microsoft Project - Workplans

- Planning phase: Bi-directional Integration with workplans (contd.)
 - Planning the Project in Oracle Projects
 - Build project plan in Oracle
 - Receive project plan along with the resources in MS Projects
 - Schedule project plan
 - Send the scheduled project to Oracle Project
 - Update the project plan in either application and receive in the other to keep the two projects in synch
 - Attach the desktop project file (.mpp) to project in Oracle (optional)

Integration with Microsoft Project - Progress

- Execution phase: Integrating progress
 - Collect and summarize progress in Oracle Projects
 - Resource Actual hours, ETC hours, Resource Actual Start/Finish Dates, Task Actual Start Finish Dates, Task Status, Progress Status, Progress Overview
 - Receive progress in MS Project
 - Reschedule the project based on latest progress
 - Send the rescheduled project to Oracle Project
 - Collect progress for the next progress cycle and repeat the above steps

Integration with Microsoft Project – Financial Plans

- Integrating Financial Plans (non-shared financial structure)
 - Receive resources, resource rates and financial tasks
 - Create project plan with or without resource assignments
 - Enter task costs/MS Projects computes task costs from resource assignments and rates
 - Send task costs or task/resource assignments hours and costs as budget lines to a financial plan.

Integration with Microsoft Project - Data Transfer from Oracle Projects to MS Project

- Planning Resource List, Resource Burdened Rates
- Project Start/Finish Dates
- Work Breakdown Structure and Tasks
 - Task Numbers, Names, Start/Finish Dates, Durations, Task Type (workplan structure)
 - Task Number, Name, Start Finish Date (for non-shared financial structure)
 - Oracle specific task attributes in custom fields – Service Type, Work Type, Task Organization, Task Manager, Billable/Chargeable flags, Transaction Start/Finish Dates
- Dependencies with lead/lag times (workplan structure)

-continued-

Integration with Microsoft Project - Data Transfer from Oracle Projects to MS Project (cont'd)

- Resource Assignments (workplan structure)
 - Planned hours, Scheduled Start/Finish dates
- Progress (workplan structure)
 - Actual start/finish dates, Actual and ETC hours of tasks and resource assignments
 - Oracle specific progress attributes in custom fields - Task Status, Progress Status, Progress Overview, Progress Comments, Physical Percent Complete.

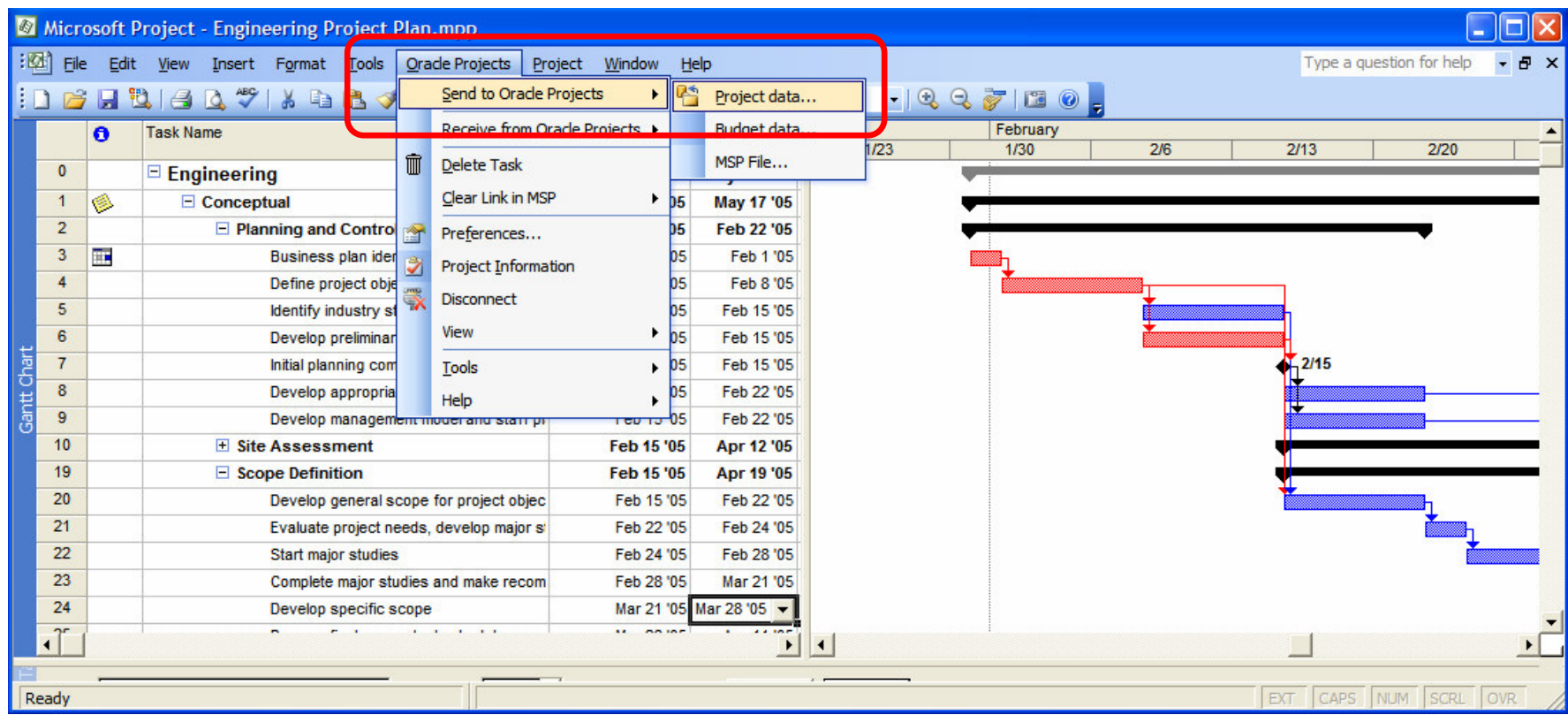
Integration with Microsoft Project - Data Transfer from MS Project to Oracle Projects

- Project Start/Finish Dates
 - Work Breakdown Structure and Tasks (workplan structure)
 - Task Numbers, Names, Durations, Constraints, Constraint Dates, Scheduled/Early/Late Start/Finish Dates, Free/Total Slacks
 - Oracle specific task attributes in stored in custom fields – Task Type, Service Type, Work Type, Task Organization, Task Manager, Billable/Chargeable flags, Transaction Start/Finish Dates
 - Dependencies with lead/lag times (workplan structure)
 - Resource Assignments to workplan tasks (workplan structure)
 - Planned hours, Scheduled Start/Finish dates
- continued-

Integration with Microsoft Project - Data Transfer from MS Project to Oracle Projects (cont'd)

- Tasks/Resource Assignments to Financial Plans (non shared financial structure)
 - Financial plan budget lines, planned hours, assignment cost
- Progress (workplan structure)
 - Actual start/finish dates, Actual and ETC hours of tasks and resource assignments (for non-shared workplan structure only)
 - Oracle specific progress attributes in stored in custom fields - Task Status, Progress Status, Progress Overview, Progress Comments, Physical Percent Complete.
- MS Project File (.mpp)

Sending Project to Oracle Projects



Sending Project to Oracle Projects

Microsoft Project Integration: Send Project to Oracle Projects

ORACLE Projects

Send Project: Select Project Template

Project Template

Copyright © 2000 - 2004 Oracle Corporation. All rights reserved.

Microsoft Project Integration: Send Project to Oracle Projects

ORACLE Projects

Send Project: Enter Project Details

* Indicates required field

Source Template

* Project Number

* Project Name

Copyright © 2000 - 2004 Oracle Corporation. All rights reserved.

Sending Project to Oracle Projects

Microsoft Project Integration: Send Project to Oracle Projects

ORACLE Projects

Send Project: Enter Options

Project Name **EP2000 Engineering Plan** Project Number **EP2000**

Send Work Breakdown Structure and Dates
 Progress Information
 Attach Project File

Information
Progress Information As Of Date, Task Status, Progress Status, Comments, Overview, Actual Effort, % Complete, Estimate to Complete, Estimated Dates and Actual Dates will be sent for the published workplan tasks. Only % Complete and Estimate to Complete will be sent for the working version tasks.
Start and Finish dates will be used for Workplan Schedule.

Cancel Next

Copyright © 2000 - 2004 Oracle Corporation. All rights reserved.

Microsoft Project Integration: Send Project to Oracle Projects

ORACLE Projects

Send Project: Review

Project Name **EP2000 Engineering Plan** Project Number **EP2000**
Last Updated **11-Jan-07**

Upload Messages

- Processing messages ...
- Your project plan has been updated successfully in Oracle Projects.

Save Messages Next

Sending Project to Oracle Projects

The screenshot displays the Microsoft Project software interface. The main window shows a project plan for 'Engineering Project Plan.mpp'. The task list on the left includes:

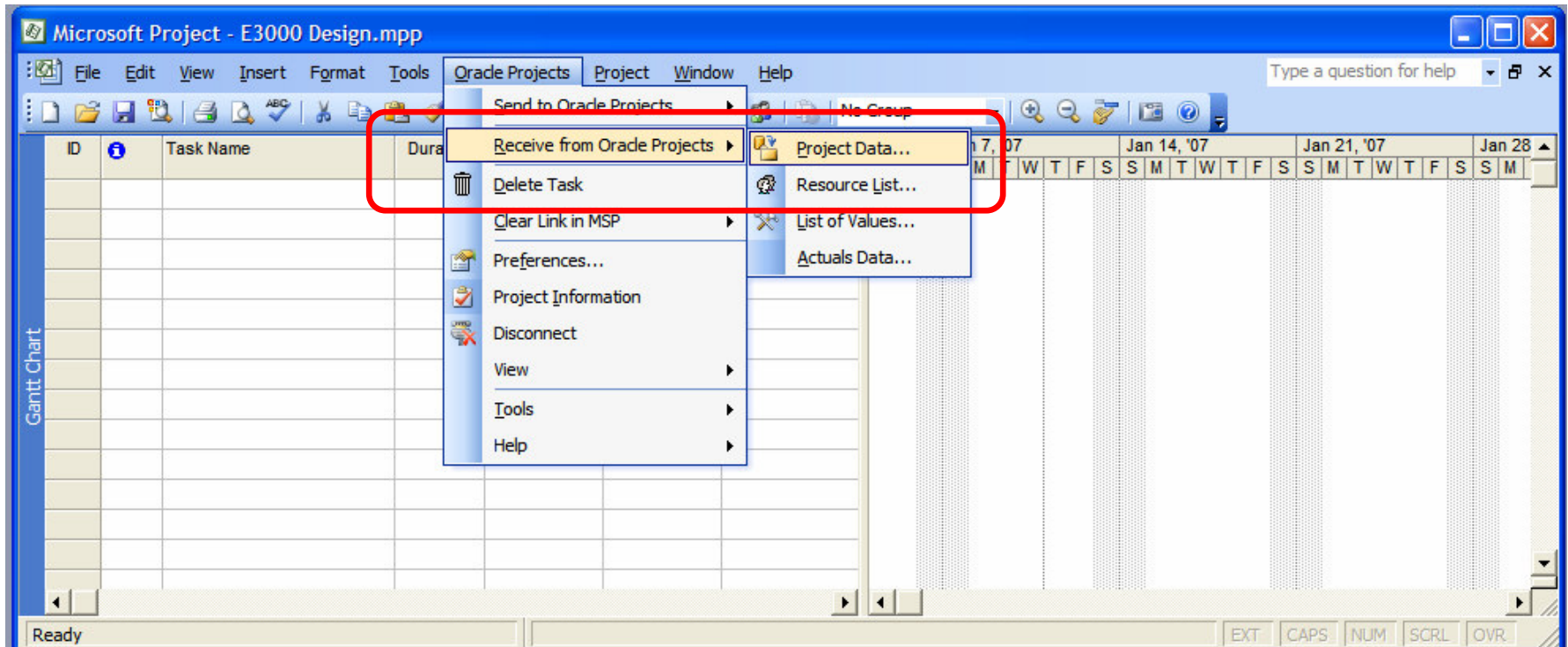
| Task ID | Task Name | Start | Finish |
|---------|--|------------|------------|
| 0 | Engineering | Jan 31 '05 | May 31 '07 |
| 1 | Conceptual | Jan 31 '05 | May 17 '05 |
| 2 | Planning and Control | Jan 31 '05 | Feb 22 '05 |
| 3 | Business plan identifying project opportunity | Jan 31 '05 | Feb 1 '05 |
| 4 | Define project objective and information needs | Feb 1 '05 | Feb 8 '05 |
| 5 | Identify industry standards for project objectives | Feb 8 '05 | Feb 15 '05 |
| 6 | Develop preliminary conceptual schedule and staffing | Feb 8 '05 | Feb 15 '05 |
| 7 | Initial planning complete | Feb 15 '05 | Feb 15 '05 |
| 8 | Develop appropriation strategy | Feb 15 '05 | Feb 22 '05 |
| 9 | Develop management model and staff plan | Feb 15 '05 | Feb 22 '05 |
| 10 | Site Assessment | Feb 15 '05 | Apr 12 '05 |
| 19 | Scope Definition | Feb 15 '05 | Apr 19 '05 |

The Gantt chart on the right shows the project schedule with bars for each task. A large grey arrow points from the Gantt chart area towards the Oracle Projects interface.

The detailed task view at the bottom shows the following data:

| Focus Outline Number | Task Name | Scheduled Start | Scheduled Finish | January 1/23 | February 1/30 | 2/6 | 2/13 | 2/20 | March 2/27 |
|----------------------|--|-----------------|------------------|--------------|---------------|-----|------|------|------------|
| 0 | EP2000 Engineering Plan | 31-Jan-2005 | 31-May-2007 | 0% | | | | | |
| 1 | Conceptual | 31-Jan-2005 | 17-May-2005 | 0% | | | | | |
| 1.1 | Planning and Control | 31-Jan-2005 | 22-Feb-2005 | 0% | | | | | |
| 1.1.1 | Business plan identifying project opportunity | 31-Jan-2005 | 01-Feb-2005 | 0% | | | | | |
| 1.1.2 | Define project objective and information needs | 01-Feb-2005 | 08-Feb-2005 | 0% | | | | | |
| 1.1.3 | Identify industry standards for project objectives | 08-Feb-2005 | 15-Feb-2005 | 0% | | | | | |
| 1.1.4 | Develop preliminary conceptual schedule and staffing | 08-Feb-2005 | 15-Feb-2005 | 0% | | | | | |
| 1.1.5 | Initial planning complete | 15-Feb-2005 | 15-Feb-2005 | 0% | | | | | |
| 1.1.6 | Develop appropriation strategy | 15-Feb-2005 | 22-Feb-2005 | 0% | | | | | |
| 1.1.7 | Develop management model and staff plan | 15-Feb-2005 | 22-Feb-2005 | 0% | | | | | |
| 1.2 | Site Assessment | 15-Feb-2005 | 12-Apr-2005 | 0% | | | | | |
| 1.3 | Scope Definition | 15-Feb-2005 | 19-Apr-2005 | 0% | | | | | |

Receiving Project in Microsoft Projects



Receiving Project in Microsoft Projects

Microsoft Project Integration

ORACLE Projects

Receive Project: Select Destination

Microsoft Project Destination Create New File from Project
Project Name

Create New File from Project Template
Template Name

Update Current File

Cancel Next

Copyright © 2000 - 2004 Oracle Corporation. All rights reserved.

Microsoft Project Integration: Receive Project from Oracle Projects

ORACLE Projects

Receive Project: Enter Options

Project Name SU Fin Test1020-3

Project Number SU Fin Test1020-3

Include Work Breakdown Structure
 Resources
 Task Numbers
 Progress Information

Retain Link to Oracle Projects

Information

Work Breakdown Structure includes the task assignments and dependencies.
Resources are added to the resource sheet.
Task Numbers are stored in the Text5 column.
Progress Information includes Actual Effort, Actual Dates, Percent Complete, Task Status, Progress Status, Work Quantity, Overview, and Comments.
Retain Link to Oracle Projects will allow you to send updates to the same project later.

Cancel Back Finish

Receiving Project in Microsoft Projects

ORACLE Projects Project List Diagnostics Home Logout Preferences Help Personalize Page

Project SU Fin Test1020-31 (SU Fin Test1020-31) Project Resources **Workplan** Control Financial Reporting

Tasks | Deliverables | Resource Usage | Setup

Workplan: Tasks >

Update Tasks

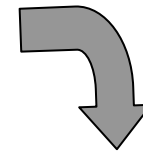
Display Hierarchy List Gantt Apply and

Style Tasks

Time Scale Start Date

TIP date format example: 27-Dec-2006

| Focus | Outline Number | Task Name | Scheduled Start | Scheduled Finish | 2006 | 2007 | | | | | | | | |
|-------|----------------|--------------------|-----------------|------------------|-----------------|------|-----|-----|-----|-----|-----|-----|-----|-----|
| | | | | | Oct | Nov | Dec | Jan | Feb | Mar | Apr | May | Jun | Jul |
| | 0 | SU Fin Test1020-31 | 10-Oct-2006 | 13-Jul-2007 | [Gantt bar] | | | | | | | | | |
| | 1 | Market Research | 10-Oct-2006 | 13-Nov-2006 | [Gantt bar: 0%] | | | | | | | | | |
| | 2 | Project Management | 14-Nov-2006 | 13-Jul-2007 | [Gantt bar: 0%] | | | | | | | | | |
| | 3 | Requiremets | 10-Oct-2006 | 23-Oct-2006 | [Gantt bar: 0%] | | | | | | | | | |
| | 4 | Design | 24-Oct-2006 | 15-Jan-2007 | [Gantt bar: 0%] | | | | | | | | | |
| | 4.1 | Module1 | 24-Oct-2006 | | [Gantt bar: 0%] | | | | | | | | | |
| | 4.2 | Module2 | 05-Dec-2006 | | [Gantt bar: 0%] | | | | | | | | | |
| | 5 | Development | 16-Jan-2007 | | [Gantt bar: 0%] | | | | | | | | | |
| | 5.1 | Algorithms | 16-Jan-2007 | | [Gantt bar: 0%] | | | | | | | | | |



Microsoft Project - Project5

File Edit View Insert Format Tools Grade Projects Project Window Help

Type a question for help

| MSP ID | Oracle Task # | Task Name | Duration | Start | 2006 | | Qtr 4, 2006 | | | Qtr 1, 2007 | | | Qtr 2, 2007 | | | Qtr 3, 2007 | | | Qtr 4, 2007 | | | Qtr 1, 2008 | | |
|--------|---------------|--------------------|----------|------------|-------------------------------------|-----|-------------|-----|-----|-------------|-----|-----|-------------|-----|-----|-------------|-----|-----|-------------|-----|-----|-------------|-----|-----|
| | | | | | Aug | Sep | Oct | Nov | Dec | Jan | Feb | Mar | Apr | May | Jun | Jul | Aug | Sep | Oct | Nov | Dec | Jan | Feb | Mar |
| 1 | | Market Research | 25 days? | Oct 10 '06 | [Gantt bar: Amy Marlin,Randy Egger] | | | | | | | | | | | | | | | | | | | |
| 2 | | Project Management | 174 days | Nov 14 '06 | [Gantt bar] | | | | | | | | | | | | | | | | | | | |
| 3 | | Requiremets | 10 days? | Oct 10 '06 | [Gantt bar] | | | | | | | | | | | | | | | | | | | |
| 4 | | Design | 60 days | Oct 24 '06 | [Gantt bar] | | | | | | | | | | | | | | | | | | | |
| 5 | | Module1 | 30 days | Oct 24 '06 | [Gantt bar] | | | | | | | | | | | | | | | | | | | |
| 6 | | Module2 | 30 days | Dec 5 '06 | [Gantt bar] | | | | | | | | | | | | | | | | | | | |
| 7 | | Development | 50 days | Jan 16 '07 | [Gantt bar] | | | | | | | | | | | | | | | | | | | |
| 8 | | Algorithms | 30 days | Jan 16 '07 | [Gantt bar] | | | | | | | | | | | | | | | | | | | |
| 9 | | User Interface | 20 days | Feb 27 '07 | [Gantt bar] | | | | | | | | | | | | | | | | | | | |
| 10 | | Testing | 40 days | Mar 27 '07 | [Gantt bar] | | | | | | | | | | | | | | | | | | | |
| 11 | | Unit Testing | 15 days | Mar 27 '07 | [Gantt bar] | | | | | | | | | | | | | | | | | | | |
| 12 | | Integrated Testing | 25 days | Apr 17 '07 | [Gantt bar] | | | | | | | | | | | | | | | | | | | |

Ready

OP³: Integration with Primavera – Integration Points

- Planning Resources
- Projects
- Work Breakdown Structures
- Activity Resource Assignments
- Financial Plans
- Actuals

OP³- Data Transfer from Oracle Projects to Primavera

- Planning Resource List including Resource Organizations, and Employee Data
- Project Start and Finish Dates
- Work Breakdown Structure and Tasks
- Classification Category/Codes as Enterprise Project Structure Codes
- Workplan Resource Assignments or Financial Plan Budget Lines as Resource Assignments
- Scheduled Start and Finish Dates for Tasks and Resource Assignments

-continued-

OP³- Data Transfer from Oracle Projects to Primavera (cont'd)

- Task and Resource Assignment Planning, Estimate to Complete and Estimate At Completion Costs
- Project Manager
- Task Manager as Primary Resource
- Project Status, Project Type and Project Classification Categories/Codes as Project Codes
- Actual costs and quantities

OP³ - Data Transfer from Primavera to Oracle Projects

- Project Start and Finish Dates
- Work Breakdown Structure and Activities
- Activity Constraints, Constraint Dates and Duration Types
- Start and Finish Dates for Activities and Resource Assignments
- Early Start/Finish and Late Start/Finish Dates for Activities
- Milestones
- Resource Assignments to Workplan Resource Assignments or Financial Plan Budget Lines

-continued-

OP³ - Data Transfer from Primavera to Oracle Projects (cont'd)

- Activity Codes to update Task Organization, Task Type, Service Type, Work Type, Billable and Chargeable Flags
- Primary Resource as Task Manager
- Estimate to Complete and Estimate at Completion quantities
- Activity Codes to Update Progress Overview, Progress Status and Progress Comments
- Activity Percent Complete

Case Study: OP³ in the Enterprise

ABC Corporation uses Primavera's scheduling and WBS/activity maintenance for planning and scheduling project work

ABC uses Oracle Projects' budgeting and forecasting features to perform detailed cost analysis based on cost budgets generated from project work data

ABC relies on OP³ to share project data between the systems

Case Study: OP³ in the Enterprise

Planning Phase of the Project

1. Project is initiated in Oracle Projects, detailed work schedule is created in Primavera, and the project data in the two systems is synchronized
2. Project is approved in Oracle Projects
3. Working and baseline versions of the cost budget are created in Oracle Projects

OP³ synchronizes the project work schedules in the two systems and creates the budget version directly from a Primavera plan

Case Study: OP³ in the Enterprise

Execution Phase of the Project

1. Actuals (cost and quantities) are entered in Oracle Projects and interfaced with Primavera
2. Progress and estimate to complete information is entered in Primavera, project is rescheduled based on the actuals and estimate to complete information and the latest work and schedule data is sent to Oracle
3. Working/Baseline versions of the budget and forecasts are created in Oracle Projects based on the latest data and compared with the baseline cost budget to monitor the financial performance of the project

OP³ synchronizes actuals, estimates to complete and progress information between the systems and creates budget/forecasts directly from the updated Primavera plan



Case Study: OP³ in the Enterprise – Details

- Project Manager uses OP³: Planning Phase
 - Initiates a project in Oracle Projects
 - Uses OP³ Autolink capability to create a linked project in Primavera
 - Uses Primavera to create WBS, activities, resources assignments and schedules the work
 - Uses OP³ to update the linked project in Oracle Projects
 - Reviews and approves the project in Oracle Projects
 - Refines and finalizes the project work and schedule in Primavera and send the final updates to the project in Oracle Projects

Case Study: OP³ in the enterprise – Details

- Financial Manager uses OP³: Planning Phase
 - Reviews the project workplan in Oracle Projects
 - Uses OP³ to create working versions of the approved cost budget in Oracle Projects
 - Budgets created from workplan resource assignment units in Primavera and resource rates in Oracle Projects
 - Reviews the working versions of the cost budget in Oracle Projects
 - Uses OP³ to create the baseline version of the approved cost budget

Case Study: OP³ in the enterprise – Details

- Project Manager uses OP³: Execution Phase
 - Enters & summarizes actual quantities and costs for resource assignments in Oracle Projects.
 - Uses OP³ to transfer actuals to Primavera
 - Enters Estimate to Complete (ETC) for the resource assignments and progress information for activities in Primavera
 - Reschedules the project in Primavera with the latest actuals & ETC information
 - Uses OP³ to send the latest schedule, progress & percent complete information to Oracle Projects
 - Generates Earned Value and other reports in Oracle based on the actuals, estimate to complete and percent complete information received from Primavera

Case Study: OP³ in the Enterprise – Details

- Financial Manager uses OP³ : Execution Phase
 - Reviews the updated project in Oracle Projects
 - Uses OP³ to create working versions of the approved cost budget/primary cost forecast in Oracle Projects
 - Reviews working versions of the cost budget and forecast in Oracle Projects
 - Uses Oracle Projects to compare the latest versions of budget and forecast with the baseline version to monitor the financial performance of the project and take corrective action, if needed

Project Initiation in Oracle Projects and Autolinking

ORACLE Projects Project List Diagnostics Home Logout Preferences Help Personalize Page

Project Resources Workplan Control Financial Reporting

Home Overview Directory Attachments Relationships Setup

Project Setup

* Indicates required field Revert Apply

* Name: FM Software Development2007 Public Sector: No Yes

* Long Name: FM Software Development2007 Access Level: Enterprise

* Number: SD1010 Priority: [dropdown]

* Organization: Executive Office City: New York

Project Type: SU OP3 Project Type State / Region: NY

Status: Pending OP3 Autolink Country: United States

Funding Approval Status: Proposed

Description: SU Final OP3 Template

Dates

| | Start Date | Finish Date | Duration (Days) | As Of Date |
|-------------|-------------|-------------|-----------------|------------|
| Project | 13-Nov-2006 | 09-Mar-2007 | | |
| Target | 13-Nov-2006 | | | |
| Transaction | | | | |

Submit Request

Run this Request...

Name: **OP3: Autolink** Copy...

Parameters: [empty]

Language: American English Language Settings... Debug Options

At these Times...

Run the Job: As Soon as Possible Schedule...

Upon Completion...

Save all Output Files

Layout: [empty]

Notify: [empty] Options...

Print to: noprint

Help (C) **Submit** Cancel

Projects

Layout: Projects

| Project ID | Anticipated Start | Anticipated Finish | Project Name | OP3 Project Long Name | OP3 Project Description |
|--------------|-------------------|--------------------|-----------------------------|-----------------------------|-------------------------|
| SU TKCC Fix1 | 13-Nov-06 | 12-Jul-07 | SU TKCC Fix1 | SU TKCC Fix1 | SU Final OP3 Template |
| SU TKCC Fix3 | 13-Nov-06 | 12-Jul-07 | SU TKCC Fix3 | SU TKCC Fix3 | SU Final OP3 Template |
| SU TKCC Fix4 | 13-Nov-06 | 12-Jul-07 | SU TKCC Fix4 | SU TKCC Fix4 | SU Final OP3 Template |
| SD1000 | 15-Nov-07 | 13-Jul-08 | FM Software Development | FM Software Development | SU Final OP3 Template |
| 1023 | 10-Oct-06 | 08-Jun-07 | 1023 | 1023 | SU-OP3 Testing Template |
| SD1010 | 13-Nov-06 | 09-Mar-07 | FM Software Development2... | FM Software Development2007 | SU Final OP3 Template |
| P3 Manual | | | P3 Manual | | |

| Project Code | Code Value | Code Description |
|-----------------|---------------------|------------------|
| OP3 Integration | Financial Plan | Financial Plan |
| Project Status | Unapproved | Unapproved |
| Project Type | SU OP3 Project T... | |

Planning Resource Lists in Oracle Projects and Primavera

Update Planning Resource List

* Indicates required field

TIP Job Group determines the jobs available for the creation of planning resources. Enabled for Workplan determines whether the planning resource list can be selected for task assignments. Centrally controlled planning resource lists can only be updated and maintained at the enterprise level.

* Name: Job Group:

* Effective From: (example: 27-Nov-2006)

Effective To:

Description:

Resource Class: Resource Format:

Buttons:

Resources

Display: All Resources

| Resource ID | Resource Name | Resource Type | Default Units / Time |
|--------------------|----------------------------------|---------------|----------------------|
| OP3 ERL | OP3 | Nonlabor | 8h/d |
| People | People | Labor | 8h/d |
| Marlin, Ms. Amy | Marlin, Ms. Amy | Labor | 8h/d |
| Emily Heather | Heather, Ms. Emily | Labor | 8h/d |
| Don Gray | Gray, Mr. Donald R | Labor | 8h/d |
| Anne Hamilton | Hamilton, Ms. Anne | Labor | 8h/d |
| Francis Coett | Coett, Francis | Labor | 8h/d |
| Randy Egger | Egger, Randy | Labor | 8h/d |
| Tamara Aaron | Aaron, Mrs. Tamara | Labor | 8h/d |
| DBA-1 | DBA-1 | Labor | 8h/d |
| Business Analyst | Business Analyst | Labor | 8h/d |
| Program Manager | Program Manager | Labor | 8h/d |
| East - Bus Analyst | Services-East - Business Analyst | Labor | 8h/d |

Buttons:

| Select Name | Resource Class | Planning Resource Combination |
|---|----------------|----------------------------------|
| <input type="checkbox"/> Anne Hamilton | People | Hamilton, Ms. Anne |
| <input type="checkbox"/> Business Analyst | People | Business Analyst |
| <input type="checkbox"/> DBA-1 | People | DBA-1 |
| <input type="checkbox"/> Don Gray | People | Gray, Mr. Donald R |
| <input type="checkbox"/> East - Bus Analyst | People | Services-East - Business Analyst |
| <input type="checkbox"/> East - Developer | People | Services-East - Developer |
| <input type="checkbox"/> Emily Heather | People | Heather, Ms. Emily |

General | Codes | Details | Units & Prices | Roles | Notes | Timesheets

Resource ID: Resource Name:

Employee ID: Title:

E-Mail Address: Office Phone: Active

WBS and Activity Maintenance in Primavera and updates to Oracle Projects

Activities

Layout: Classic WBS Layout Filter: All Activities

| Activity Name | Duration | Start | Finish |
|-------------------------|----------|-------------|-----------|
| FM Software Deve | 85.0d | 13-Nov-06 A | 09-Mar-07 |
| Market Research | 26.0d | 13-Nov-06 | 18-Dec-06 |
| Project Management | 85.0d | 13-Nov-06 | 09-Mar-07 |
| Requirements | 15.0d | 13-Nov-06 | 01-Dec-06 |
| Design | 20.0d | 18-Dec-06 | 12-Jan-07 |
| Module1 | 10.0d | 18-Dec-06 | 29-Dec-06 |
| Module2 | 10.0d | 01-Jan-07 | 12-Jan-07 |
| Development | 20.0d | 15-Jan-07 | 09-Feb-07 |
| Algorithms | 10.0d | 15-Jan-07 | 26-Jan-07 |
| User Interface | 10.0d | 29-Jan-07 | 09-Feb-07 |
| Testing | 15.0d | 12-Feb-07 | 02-Mar-07 |
| Unit Testing | 5.0d | 12-Feb-07 | 16-Feb-07 |
| Integrated Testing | 10.0d | 19-Feb-07 | 02-Mar-07 |

General | Status | Resources | Relationships | Codes | Notebook | Steps | Feedback | WPs & Docs | Expenses | Summary

Activity: 4.1 | Module1 | Project: SD1010

Activity Type: Task Dependent | Duration Type: Fixed Duration & Units | % Complete Type: Duration | Activity Calendar: Standard 5 Day Workweek

WBS: SD1010.4 Design | Responsible Manager: Marlin, Ms. Amy | Primary Resource: Marlin, Ms. Amy

OP3 Project Details

P3e Project ID: SD1010 Name: FM Software Development2007

OP3 Project Settings

| Attribute Name | Value |
|----------------------------|---|
| Actuals Last Update Status | Succeeded at 11/27/2006 18:29:27 |
| Project Last Update Status | Succeeded at 11/27/2006 18:29:27 |
| Actuals Last Update | |
| Project Last Update | 11/27/2006 18:29:27 (took 3 seconds) (SERVICES) |
| OP Project Number | SD1010 |
| OP Responsibility | OP3 Superuser |
| OP User | SERVICES |
| Project Cost Type | BURDEN |

Commit/Refresh

Project

Submit

Generate log

OP3 Release 3.2

ORACLE Projects

Project FM Software Development2007 (SD1010)

Project | Resources | **Workplan** | Control | Fina

Tasks | Deliverables | Resource Usage | Setup

Workplan: Tasks >

Update Tasks

Display: Hierarchy List Gantt

View: Workplan Personalize

Select Task:

Select All | Select None | Expand All | Collapse All

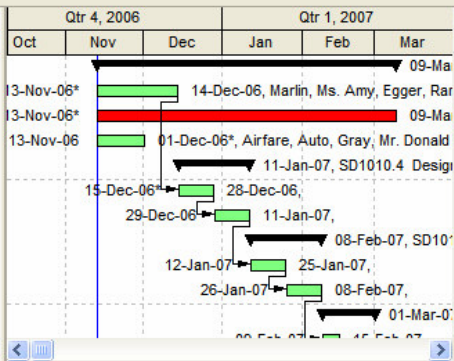
| Select | Focus | Outline Number | Task Name | Scheduled Start | Scheduled Finish | Planned Effort | Planned Cost | Resources |
|--------|-------|----------------|-----------------------|-----------------|------------------|----------------|--------------|------------------------------|
| | | 0 | SU Final OP3 Template | 13-Nov-2006 | 09-Mar-2007 | 1700 | 329,972.50 | |
| | | 1 | Market Research | 13-Nov-2006 | 18-Dec-2006 | 300 | 54,375.00 | Marlin, Ms. Amy, Randy Egger |
| | | 2 | Project Management | 13-Nov-2006 | 09-Mar-2007 | 680 | 127,075.00 | Tamara Aaron |
| | | 3 | Requirements | 13-Nov-2006 | 01-Dec-2006 | 80 | 13,972.50 | Don Gray, Air Fare, Auto |
| | | 4 | Design | 18-Dec-2006 | 12-Jan-2007 | 320 | 67,275.00 | |
| | | 4.1 | Module1 | 18-Dec-2006 | 29-Dec-2006 | 160 | 29,900.00 | Marlin, Ms. Amy, Don Gray |
| | | 4.2 | Module2 | 01-Jan-2007 | 12-Jan-2007 | 160 | 37,375.00 | Emily Heather, Randy Egger |
| | | 5 | Development | 15-Jan-2007 | 09-Feb-2007 | 160 | 41,112.50 | |
| | | 5.1 | Algorithms | 15-Jan-2007 | 26-Jan-2007 | 80 | 22,425.00 | Randy Egger |
| | | 5.2 | User Interface | 29-Jan-2007 | 09-Feb-2007 | 80 | 18,687.50 | Marlin, Ms. Amy |

Task Schedule, Other Task Attributes and Activity Codes in Primavera and Oracle Projects

Activities

Layout: Classic WBS Layout | Filter: All Activities

| Activity ID | Start | Finish | Duration Type | Primary Constraint | Activity Status | Activity Type |
|--------------------------------|------------|-------------|-----------------------|--------------------|-----------------|----------------|
| SD1010 FM Software Development | 13-Nov-06 | 09-Mar-07 | | | | |
| 1 | 13-Nov-06* | 14-Dec-06 | Fixed Units/Time | Start On | Not Started | Task Dependent |
| 2 | 13-Nov-06* | 09-Mar-07 | Fixed Duration and... | Start On or After | Not Started | Task Dependent |
| 3 | 13-Nov-06 | 01-Dec-0... | Fixed Units/Time | Finish On | Not Started | Task Dependent |
| SD1010.4 Design | 15-Dec-06 | 11-Jan-07 | | | | |
| 4.1 | 15-Dec-06* | 28-Dec-06 | Fixed Units | Start On or After | Not Started | Task Dependent |
| 4.2 | 29-Dec-06 | 11-Jan-07 | Fixed Units/Time | | Not Started | Task Dependent |
| SD1010.5 Development | 12-Jan-07 | 08-Feb-07 | | | | |
| 5.1 | 12-Jan-07 | 25-Jan-07 | Fixed Units/Time | | Not Started | Task Dependent |
| 5.2 | 26-Jan-07 | 08-Feb-07 | Fixed Units/Time | | Not Started | Task Dependent |
| SD1010.6 Testing | 09-Feb-07 | 01-Mar-07 | | | | |
| 6.1 | 09-Feb-07 | 15-Feb-07 | Fixed Units/Time | | Not Started | Task Dependent |



Activity 2 | Project Management | Project SD1010

| Activity Code | Code Value | Description |
|-------------------|------------|-------------------------|
| Task Organization | 2656 | Construction |
| Billable | Y | Yes |
| Chargable | Y | Yes |
| Progress Status | ON_TRACK | On Track |
| Task Type | 10088 | Progress Test Task Type |
| Work Type | 10024 | Internal - capital |
| Service Type | DESIGN | Design |

ORACLE Projects

Project FM Software Development2007 (SD1010)

Project | Resources | **Workplan** | Control | Fin

Update Tasks

Display Hierarchy List Gantt

View **workplan2**

Select Task : |

Select All | Select None | Expand All | Collapse All

| Task Number | Task Name | Scheduled Start | Scheduled Finish | Organization | Service Type | Work Type |
|-------------|-----------------------|-----------------|------------------|---------------|----------------|--------------------|
| 1 | SU Final OP3 Template | 13-Nov-2006 | 09-Mar-2007 | | | |
| 1 | Market Research | 13-Nov-2006 | 14-Dec-2006 | Services-East | Administration | NON BILLABLE |
| 2 | Project Management | 13-Nov-2006 | 09-Mar-2007 | Construction | Design | Internal - capital |
| 3 | Requirements | 16-Nov-2006 | 08-Mar-2007 | Services-East | Administration | NON BILLABLE |
| 4 | Design | 15-Dec-2006 | 11-Jan-2007 | Services-East | Administration | NON BILLABLE |
| 4.1 | Module1 | 15-Dec-2006 | 28-Dec-2006 | Services-East | Administration | NON BILLABLE |
| 4.2 | Module2 | 29-Dec-2006 | 11-Jan-2007 | Services-East | Administration | NON BILLABLE |



Creating Budget Versions in Oracle Projects from Primavera Plan

The screenshot shows the Oracle Projects interface. On the left, a Gantt chart displays project activities for 'SD1010 FM Software Development'. Activity 1 is highlighted with a red box. On the right, the 'OP3 Project Details' window is open, showing project settings. A red dashed arrow points from the Gantt chart to the 'Project Options' section of the details window, where 'Project' and 'Generate FP' are checked.

| Activity ID | Start | Finish | At Completion Units | At Completion Cost |
|--------------------------------|-----------|-----------|---------------------|--------------------|
| SD1010 FM Software Development | 13-Nov-06 | 09-Mar-07 | 1540h | \$174,400.00 |
| 1 | 13-Nov-06 | 15-Dec-06 | 300h | \$40,000.00 |
| 2 | 13-Nov-06 | 09-Mar-07 | 680h | \$68,000.00 |
| SD1010.4 Design | 18-Dec-06 | 12-Jan-07 | 320h | \$36,000.00 |
| 4.1 | 18-Dec-06 | 29-Dec-06 | 160h | \$16,000.00 |
| 4.2 | 01-Jan-07 | 12-Jan-07 | 160h | \$20,000.00 |
| SD1010.5 Development | 15-Jan-07 | 09-Feb-07 | 160h | \$22,000.00 |
| 5.1 | 15-Jan-07 | 26-Jan-07 | 80h | \$12,000.00 |
| 5.2 | 29-Jan-07 | 09-Feb-07 | 80h | \$10,000.00 |

ORACLE Projects

Project FM Software Development2007 (SD1010)

[Project List](#) [Diagnostics](#) [Home](#) [Logout](#) [Preferences](#)

[Project](#) [Resources](#) [Workplan](#) [Control](#) [Final](#)

[Budgets and Forecasts](#) | [Billing](#) | [Percent Complete](#) | [Tasks](#) | [Setup](#)

Financial: [Budgets and Forecasts](#) >

[Baseline Versions](#)

Maintain Budget Versions: Approved Cost Budget

Working Versions

Select a Version:

| Version Select Number | Version Name | People Effort | Equipment Effort | Raw Cost | Burdened Cost | Status | Current | Submit | Baseline | Rework | Change Control |
|-------------------------|-------------------|---------------|------------------|------------|---------------|---------|-------------------------------------|---------------------------------------|---|---------------------------------------|---|
| <input type="radio"/> 2 | Primavera Version | 1700 | 0 | 188,400.00 | 350,347.50 | Working | <input checked="" type="checkbox"/> | <input type="button" value="Submit"/> | <input type="button" value="Baseline"/> | <input type="button" value="Rework"/> | <input type="button" value="Change Control"/> |
| <input type="radio"/> 1 | Primavera Version | 1540 | 0 | 174,400.00 | 324,185.00 | Working | <input type="checkbox"/> | <input type="button" value="Submit"/> | <input type="button" value="Baseline"/> | <input type="button" value="Rework"/> | <input type="button" value="Change Control"/> |

TIP Amounts are listed in Project Currency: USD. Effort is listed in Hours.

Baseline Versions

Select a Version:

| Version Select Number | Version Name | People Effort | Equipment Effort | Raw Cost | Burdened Cost | Baselined By | Baseline Date | Original | Current |
|-------------------------|-------------------|---------------|------------------|------------|---------------|-----------------|---------------|-------------------------------------|-------------------------------------|
| <input type="radio"/> 1 | Primavera Version | 1700 | 0 | 188,400.00 | 350,347.50 | Marlin, Ms. Amy | 27-Nov-2006 | <input checked="" type="checkbox"/> | <input checked="" type="checkbox"/> |

TIP Amounts are listed in Project Currency: USD. Effort is listed in Hours.

Reviewing Budget Versions in Oracle Projects

ORACLE Projects Project List Diagnostics Home Logout Preferences Help

Project FM Software Development2007 (SD1010) Project Resources Workplan Control **Financial**

Budgets and Forecasts | Billing | Percent Complete | Tasks | Setup

Financial: Budgets and Forecasts >

Baseline Versions

Maintain Budget Versions: Approved Cost Budget

Working Versions

Select a Version: Create Working Copy

| Select Number | Version | Version Name | People | Equipment | Effort | Raw Cost | Burdened | Cost Status | Current Subm | Baseline | Rework | Change Control |
|-----------------------|---------|-------------------|--------|-----------|--------|------------|------------|-------------|-------------------------------------|----------|--------|--------------------------------------|
| <input type="radio"/> | 2 | Primavera Version | 1700 | | 0 | 188,400.00 | 350,347.50 | Working | <input checked="" type="checkbox"/> | | | <input type="button" value="Print"/> |
| <input type="radio"/> | 1 | Primavera Version | 1340 | | 0 | | | | | | | <input type="button" value="Print"/> |

TIP Amounts are listed in Project Currency: USD. Effort is listed in

Baseline Versions

Select a Version: Create Working Copy

| Select Number | Version | Version Name | People | Equipment | Effort |
|-----------------------|---------|-------------------|--------|-----------|--------|
| <input type="radio"/> | 1 | Primavera Version | 1700 | | |

TIP Amounts are listed in Project Currency: USD. Effort is listed in

Project FM Software Development2007 (SD1010) Project Resources Workplan Control **Financial** Report

Budgets and Forecasts | Billing | Percent Complete | Tasks | Setup

Financial: Budgets and Forecasts > Maintain Budget Versions >

Edit Budget: Approved Cost Budget

Version Number 2 Last Generated 27-Nov-2006
Version Name Primavera Version Last Updated 27-Nov-2006

Actions

Select Planning Elements: Adjust 1-10 of 15

Select All | Select None

| Select | Project or Task | Planning Element | | | Currency | Quantity | | Raw Cost | | Edit | Update Budget Line Details |
|--------------------------|------------------------|------------------|-------------|-----------------|----------|----------|-----------|----------|--|-------------------------------------|--|
| | | Budget Start | Budget End | Resource | | Total | Total | Total | | | |
| <input type="checkbox"/> | Market Research (1) | 13-Nov-2006 | 15-Dec-2006 | Marlin, Ms. Amy | USD | 200 | 25,000.00 | | | <input type="button" value="Edit"/> | <input type="button" value="Details"/> |
| <input type="checkbox"/> | Market Research (1) | 13-Nov-2006 | 15-Dec-2006 | Randy Egger | USD | 100 | 15,000.00 | | | <input type="button" value="Edit"/> | <input type="button" value="Details"/> |
| <input type="checkbox"/> | Project Management (2) | 13-Nov-2006 | 09-Mar-2007 | Tamara Aaron | USD | 680 | 68,000.00 | | | <input type="button" value="Edit"/> | <input type="button" value="Details"/> |
| <input type="checkbox"/> | Requirements (3) | 13-Nov-2006 | 01-Dec-2006 | Air Fare | USD | | 2,000.00 | | | <input type="button" value="Edit"/> | <input type="button" value="Details"/> |
| <input type="checkbox"/> | Requirements (3) | 14-Nov-2006 | 29-Nov-2006 | Auto | USD | 1000 | 400.00 | | | <input type="button" value="Edit"/> | <input type="button" value="Details"/> |
| <input type="checkbox"/> | Requirements (3) | 15-Nov-2006 | 30-Nov-2006 | Don Gray | USD | 80 | 6,000.00 | | | <input type="button" value="Edit"/> | <input type="button" value="Details"/> |
| <input type="checkbox"/> | Module1 (4.1) | 18-Dec-2006 | 29-Dec-2006 | Don Gray | USD | 80 | 6,000.00 | | | <input type="button" value="Edit"/> | <input type="button" value="Details"/> |
| <input type="checkbox"/> | Module1 (4.1) | 18-Dec-2006 | 29-Dec-2006 | Marlin, Ms. Amy | USD | 80 | 10,000.00 | | | <input type="button" value="Edit"/> | <input type="button" value="Details"/> |
| <input type="checkbox"/> | Module2 (4.2) | 01-Jan-2007 | 12-Jan-2007 | Emily Heather | USD | 80 | 8,000.00 | | | <input type="button" value="Edit"/> | <input type="button" value="Details"/> |
| <input type="checkbox"/> | Module2 (4.2) | 01-Jan-2007 | 12-Jan-2007 | Randy Egger | USD | 80 | 12,000.00 | | | <input type="button" value="Edit"/> | <input type="button" value="Details"/> |

Interfacing Actuals from Oracle Projects to Primavera

Workplan: Tasks >

Update Task Progress Details

Task Number 1 Cancel Recalculate and Continue Updating Submit

Task Name **Market Research**

Summary Subtasks Resources Deliverables Progress Report

Changes made to resources will be submitted upon navigation away from this page.

View Resources for this task

| Planning Resource | UOM | Planned Quantity | Actual to Date | ETC Estimated Finish | Update Progress |
|-------------------|-------|------------------|----------------|----------------------|-----------------|
| Marlin, Ms. Amy | Hours | 200 | 100 | 100 | |
| Randy Egger | Hours | 100 | 50 | 50 | |

TIP date format example: 30-Nov-2006

OP3 Project Details

P3e Project ID: SD1010 Name: FM Software Development2007

Commit/Refresh

| Attribute Name | Value |
|--|---|
| <input checked="" type="checkbox"/> Actuals Last Update Status | |
| Financial Plan Last Update Status | Request Id 3150297 Succeeded at 11/27/2006 21:47:23 |
| Project Last Update Status | Request Id 3150297 Succeeded at 11/27/2006 21:47:23 |
| Actuals Last Update | |
| Financial Plan Last Update | 11/27/2006 21:47:25 (took 2 seconds) (SERVICES) |
| Project Last Update | 11/27/2006 21:47:23 (took 7 seconds) (SERVICES) |
| Financial Plan Status | Working |
| Financial Plan Type | Approved Cost Budget |
| Financial Version Name | Primavera Version |
| OP Project Number | SD1010 |
| OP Responsibility | OP3 Superuser |
| OP User | SERVICES |
| Project Cost Type | BURDEN |

Update

Project

Actuals

Project Options:

Generate FP

Generate log

OP3 Release 3.2

Activities

Layout: Classic WBS Layout Filter: All Activities

| Activity ID | Start | Finish | At Completion Units | At Completion Cost |
|----------------------|-----------|-----------|---------------------|--------------------|
| 1 | 13-Nov-06 | 15-Dec-06 | 300h | \$37,000.00 |
| 2 | 13-Nov-06 | 09-Mar-07 | 680h | \$68,000.00 |
| 3 | 13-Nov-06 | 01-Dec-06 | 80h | \$8,400.00 |
| SD1010.4 Design | 18-Dec-06 | 12-Jan-07 | 320h | \$36,000.00 |
| 4.1 | 18-Dec-06 | 29-Dec-06 | 160h | \$16,000.00 |
| 4.2 | 01-Jan-07 | 12-Jan-07 | 160h | \$20,000.00 |
| SD1010.5 Development | 15-Jan-07 | 09-Feb-07 | 160h | \$22,000.00 |
| 5.1 | 15-Jan-07 | 26-Jan-07 | 80h | \$12,000.00 |
| 5.2 | 29-Jan-07 | 09-Feb-07 | 80h | \$10,000.00 |
| SD1010.6 Testing | 12-Feb-07 | 02-Mar-07 | 160h | \$14,000.00 |

Qtr 4, 2006

Oct Nov Dec Jan

13-Nov-06 01-Dec-06, Airfar

18-Dec-06 29-Dec-06

01-Jan-07 1

15-Jan-07

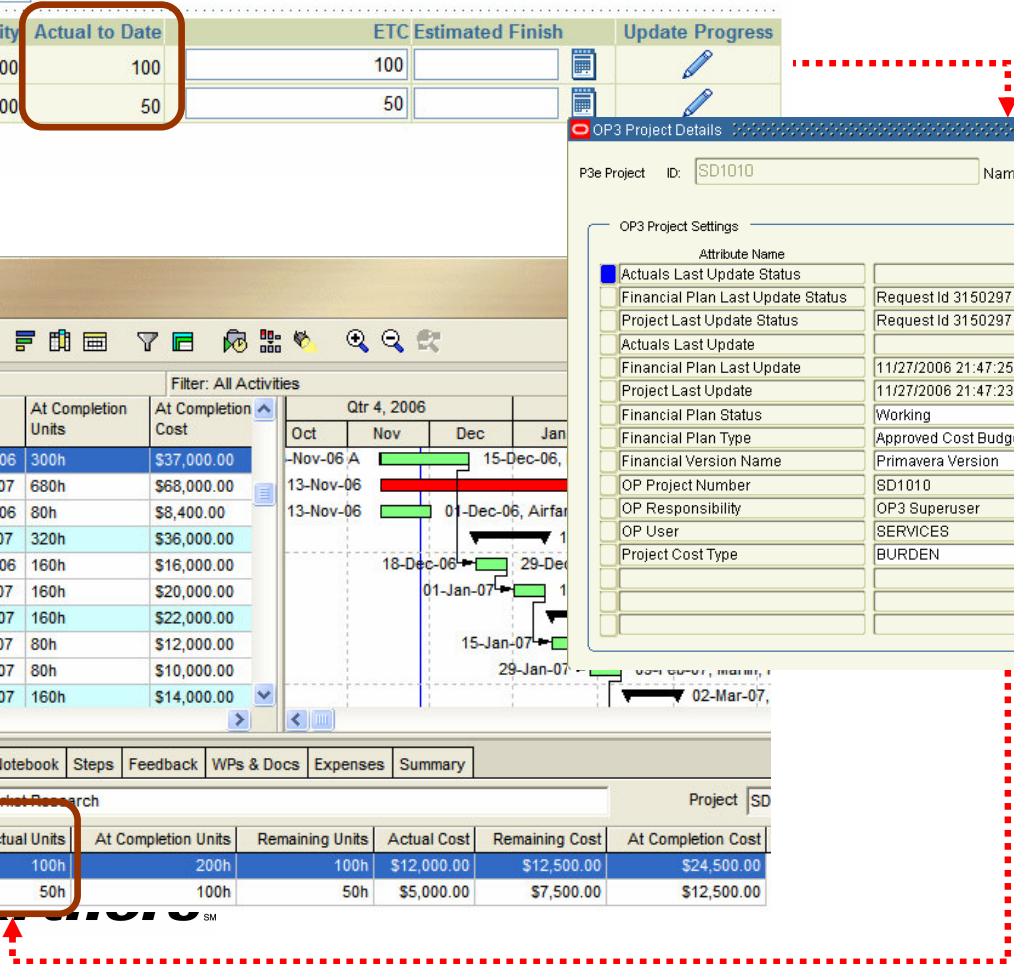
29-Jan-07

02-Mar-07

General Status Resources Codes Relationships Notebook Steps Feedback WPs & Docs Expenses Summary

Activity 1 Market Research Project SD

| Resource ID | Start | Finish | Actual Units | At Completion Units | Remaining Units | Actual Cost | Remaining Cost | At Completion Cost |
|-----------------|-------------|-----------|--------------|---------------------|-----------------|-------------|----------------|--------------------|
| Marlin, Ms. Amy | 13-Nov-06 A | 15-Dec-06 | 100h | 200h | 100h | \$12,000.00 | \$12,500.00 | \$24,500.00 |
| Randy Egger | 13-Nov-06 A | 15-Dec-06 | 50h | 100h | 50h | \$5,000.00 | \$7,500.00 | \$12,500.00 |



Entering Progress and Estimate to Complete in Primavera and sending updates to Oracle Projects

Activities

Layout: Classic WBS Layout | Filter: All Activities

| Activity Name | Actual Start | Progress Status | Activity % Complete | OP3 Progress Overview | OP3 Progress Comment |
|--------------------------------|--------------|-----------------|---------------------|-----------------------|--------------------------|
| SD1010_FM Software Development | 13-Nov-06 | | | | |
| Market Research | 13-Nov-06 | ON_TRACK | 45.45% | Proceeding Well | Expect to Finish on Time |
| Project Management | | | 0% | | |
| Requirements | | | 0% | | |
| SD1010.4 Design | | | | | |
| Module1 | | | 0% | | |

Activity 1: Market Research

| Resource ID | Actual Start | Remaining Units | Start | Finish | Actual Units | At Completion Units | Actual Cost | Remaining Cost |
|-----------------|--------------|-----------------|-------------|-----------|--------------|---------------------|-------------|----------------|
| Marlin, Ms. Amy | 15-Nov-06 | 120h | 15-Nov-06 A | 19-Dec-06 | 100h | 220h | \$12,000.00 | |
| Randy Egger | 14-Nov-06 | 60h | 14-Nov-06 A | 18-Dec-06 | 50h | 110h | \$5,000.00 | |

OP3 Project Details

P3e Project ID: SD1010 | Name: FM Software Development2007

OP3 Project Settings

| Attribute Name | Value |
|-----------------------------------|---|
| Actuals Last Update Status | Request Id 3150309 Succeeded at 11/27/2006 22:33:56 |
| Financial Plan Last Update Status | Request Id 3150297 Succeeded at 11/27/2006 21:47:21 |
| Project Last Update Status | Request Id 3150297 Succeeded at 11/27/2006 21:47:21 |
| Actuals Last Update | 11/27/2006 22:33:56 (took 2 seconds) (SERVICES) |
| Financial Plan Last Update | 11/27/2006 21:47:25 (took 2 seconds) (SERVICES) |
| Project Last Update | 11/27/2006 21:47:23 (took 7 seconds) (SERVICES) |
| Financial Plan Status | Working |
| Financial Plan Type | Approved Cost Budget |
| Financial Version Name | Primavera Version |
| OP Project Number | SD1010 |
| OP Responsibility | OP3 Superuser |
| OP User | SERVICES |
| Project Cost Type | BURDEN |

Buttons: Commit/Refresh, Project (checked), Actuals, Project Options: Generate FP, Submit, Generate log

Workplan: Tasks > Update Task Progress Details

Task Number 1 | Task Name Market Research

Buttons: Cancel, Recalculate and Continue Updating

Summary | Subtasks | Resources | Deliverables | Progress Report

As of Date: 27-Nov-2006

Task Status: In Progress

Progress Status: On Track

Progress Overview: Proceeding Well

Comments: Expect to Finish on Time

Workplan: Tasks > Update Task Progress Details

Task Number 1 | Task Name Market Research

Buttons: Cancel, Recalculate and Continue Updating

Summary | Subtasks | Resources | Deliverables | Progress Report

Changes made to resources will be submitted upon navigation away from this page.

View: Resources for this task

| Planning Resource | UOM | Planned Quantity | Actual Quantity | ETC Estimated Finish |
|-------------------|-------|------------------|-----------------|----------------------|
| Marlin, Ms. Amy | Hours | 220 | 100 | 120 |
| Randy Egger | Hours | 110 | 50 | 60 |

TIP date format example: 27-Nov-2006

Creating rolling forecasts in Oracle Projects based on the latest Actuals and Estimate to Complete

Activities

Layout: Classic WBS Layout

| Activity Name | At Completion Units | At Completion Cost |
|----------------------------|---------------------|--------------------|
| SD1010 FM Software Develop | 1730h | \$189,400.00 |
| market research | 330h | \$41,000.00 |
| Project Management | 680h | \$68,000.00 |
| Requirements | 80h | \$8,400.00 |
| SD1010.4 Design | 320h | \$36,000.00 |
| Module1 | 160h | \$16,000.00 |
| Module2 | 160h | \$20,000.00 |

Filter: All Activities

| Qtr 4, 2006 | Qtr 1, 2007 | | | |
|-------------|-------------|---------------------------------------|---------------------|---------------------------|
| Oct | Nov | Dec | Jan | Feb |
| Nov-06 A | | 19-Dec-06, Marlin, Ms. Amy, E | | |
| 13-Nov-06 | | | | |
| 13-Nov-06 | | 01-Dec-06, Airfare, Auto, Gray, Mr. T | | |
| | | | 12-Jan-07, SD1010.4 | |
| | | 18-Dec-06 | | 29-Dec-06, Marlin, Ms. Ar |

Activity 1: Market Research

| Resource ID | Actual Units | Remaining Units | At Completion Units | Actual Cost | Remaining Cost | At Completion Cost |
|-----------------|--------------|-----------------|---------------------|-------------|----------------|--------------------|
| Marlin, Ms. Amy | 100h | 120h | 220h | \$12,000.00 | \$15,000.00 | \$27,000.00 |
| Randy Egger | 50h | 60h | 110h | \$5,000.00 | \$9,000.00 | \$14,000.00 |

OP3 Project Details

P3e Project ID: SD1010 Name: FM Software Development2007

OP3 Project Settings

| Attribute Name | Value |
|-----------------------------------|---|
| Actuals Last Update Status | Request Id 3150309 Succeeded at 11/27/2006 22:33:56 |
| Financial Plan Last Update Status | Request Id 3150297 Succeeded at 11/27/2006 21:47:24 |
| Project Last Update Status | Succeeded at 11/27/2006 23:07:16 |
| Actuals Last Update | 11/27/2006 22:33:56 (took 2 seconds) (SERVICES) |
| Financial Plan Last Update | 11/27/2006 21:47:25 (took 2 seconds) (SERVICES) |
| Project Last Update | 11/27/2006 23:07:16 (took 12 seconds) (SERVICES) |
| Financial Plan Status | Working |
| Financial Plan Type | Forecasted Cost |
| Financial Version Name | Primavera version |
| OP Project Number | SD1010 |
| OP Responsibility | OP3 Superuser |
| OP User | SERVICES |
| Project Cost Type | BURDEN |

Project Options:

- Project
- Actuals
- Generate FP

Buttons: Commit/Refresh, Update, Submit, Generate log

ORACLE Projects

Project FM Software Development2007 (SD1010)

Budgets and Forecasts | Billing | Percent Complete | Tasks | Setup

Financial: Budgets and Forecasts > Maintain Forecast Versions >

Edit Forecast: Forecasted Costs

Version Number 2 Last Generated 28-Nov-2006
Version Name Primavera Version Last Updated 28-Nov-2006

View cost

Select Planning Elements: Adjust

| Project or Task | Resource | Currency | Actual | ETC | Forecast | Actual | ETC | Forecast |
|---------------------|-----------------|----------|--------|-----|----------|-----------|-----------|-----------|
| Market Research (1) | Marlin, Ms. Amy | USD | 100 | 120 | 220 | 12,000.00 | 15,000.00 | 27,000.00 |
| Market Research (1) | Randy Egger | USD | 50 | 60 | 110 | 5,000.00 | 9,000.00 | 14,000.00 |
| Project Management | Tamara Aaron | USD | | 680 | 680 | 68,000.00 | 68,000.00 | |

ORACLE Projects

Project FM Software Development2007 (SD1010)

Budgets and Forecasts | Billing | Percent Complete | Tasks | Setup

Financial: Budgets and Forecasts >

Approved Versions

Maintain Forecast Versions Forecasted Costs

Working Versions

Select a Version: Create Working Copy

| Version Number | Version Name | People Effort | Equipment Effort | Raw Cost | Burdened Cost | Status | Current | Submit | Approve | Rework | Change Control |
|----------------|-------------------------------|---------------|------------------|------------|---------------|---------|-------------------------------------|--------|---------|--------|----------------|
| 2 | Primavera Version | 1730 | 0 | 189,400.00 | 37,447.50 | Working | <input checked="" type="checkbox"/> | | | | |
| 1 | Initial Cost Forecast Version | 1700 | 0 | 188,400.00 | 350,347.50 | Working | | | | | |



Thank you

For more information:

www.ProjectP.com

650-712-6200