



ORACLE®

Financial Close and Disclosure Management for the ERP

Janette Kosior
Director, Product Mgt

Dave Roberts
Sr. Manager, Product Mgt

Safe Harbor Statement

The following is intended to outline our general product direction. It is intended for information purposes only, and may not be incorporated into any contract. It is not a commitment to deliver any material, code, or functionality, and should not be relied upon in making purchasing decisions.

The development, release, and timing of any features or functionality described for Oracle's products remains at the sole discretion of Oracle.

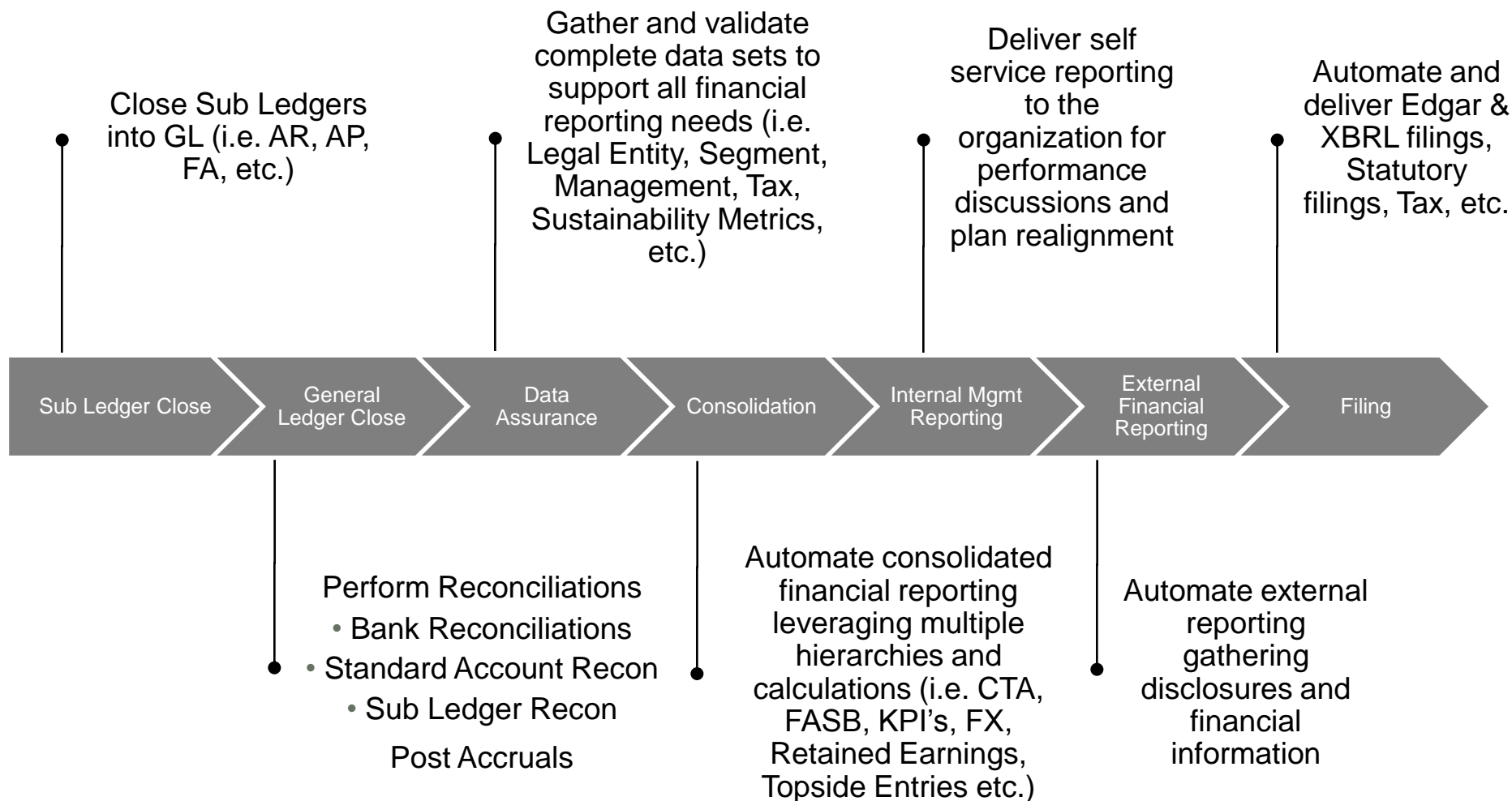
Agenda

- Solution Overview
- Feature Overview
- Demo



Financial Close Process Overview

Close Process and Key Activities



Challenges to ERP Close

No workflow or task management across the modules

Sub Ledger Close

General Ledger Close

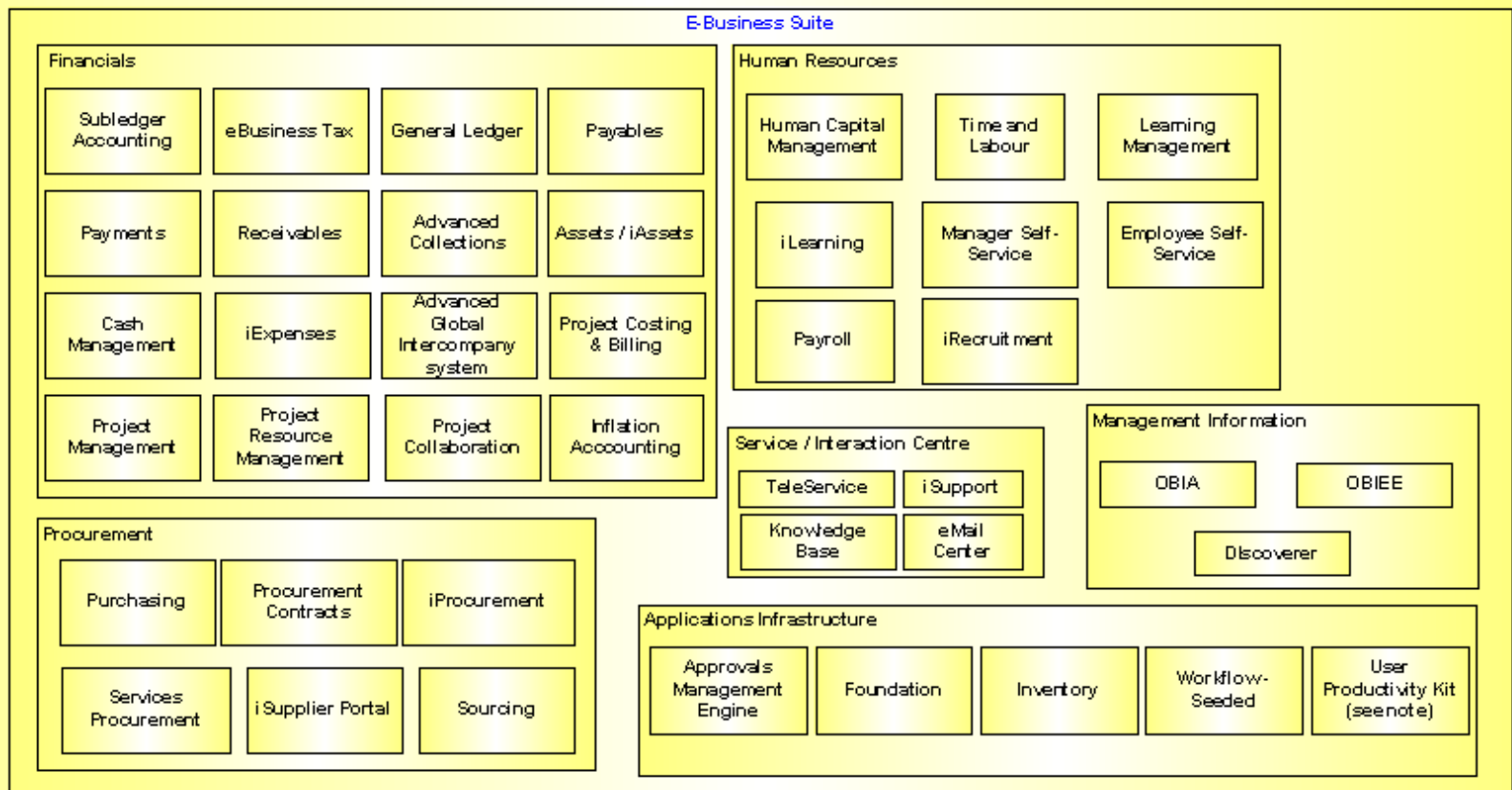
Data Assurance

Consolidation

Internal Mgmt Reporting

External Financial Reporting

Filing



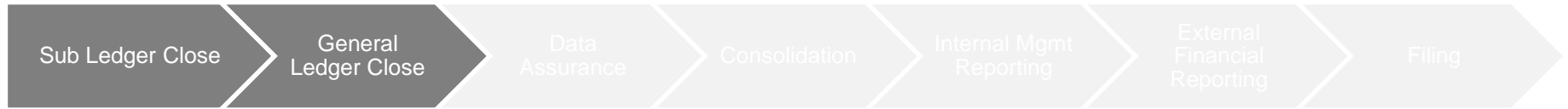
ORACLE

Major ERP activities for Close

1. Close PO for month
2. Close Project Billing for month
3. Close Project Costing for month
4. Run post processes for PO, PB, PC, etc.
5. Close AR sub ledger for month
6. Close AP sub ledger for month
7. Close Inventory sub ledger for month
8. Close HCM sub ledger for month
9. Close FA/AM sub ledger for month
10. Run revaluation / remeasurement processes
11. Run GL post process for AR, AP, Inv, etc.
12. Reconcile sub ledgers to GL
13. Reconcile all accounts and approve adjustments
14. Clear suspense accounts
15. Post accruals
16. Run allocations
17. Run consolidation to summary ledgers
18. Run summary allocations
19. Export into excel
20. Collect non actuals data for reporting (lease, plan, fcst, credit line, headcount, etc.)
21. Compile and create reports
22. Reconcile to sources
23. Distribute V1 reporting
24. Changes? Issues? Go to step 1, rinse and repeat

Key Challenges of ERP Close

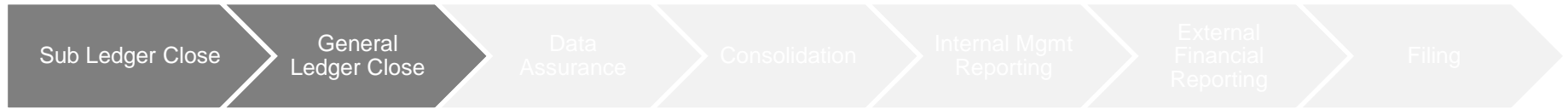
No workflow or task management across the modules



- The status of sub ledgers needs to be manually confirmed before moving forward to the next step
- Account reconciliations are confirmed manually
- Fixed assets is particularly difficult due to many manual steps:
 - FA retirements
 - FA accruals
 - Adj. for non capitalized items
 - Useful life adjustment
 - Depreciation
 - Gain/Loss on FA

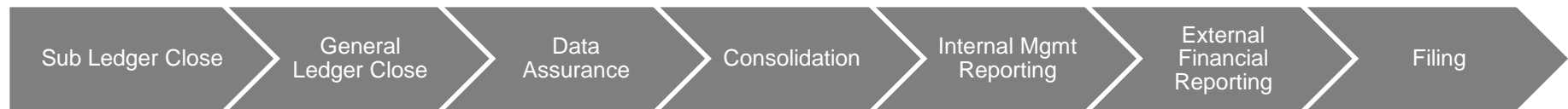
Key Challenges of ERP Close

No workflow or task management across the modules



- Accruals are confirmed and managed manually
- Clearing suspense accounts is confirmed manually
- Consolidation creates more transactions and requires reconciliation to ensure the dataset is complete
- Manual and automated steps work independently
- Report creation and distribution is manual
- Iterations take time and introduce risk
- Process and reporting additions or changes take months of planning and preparation

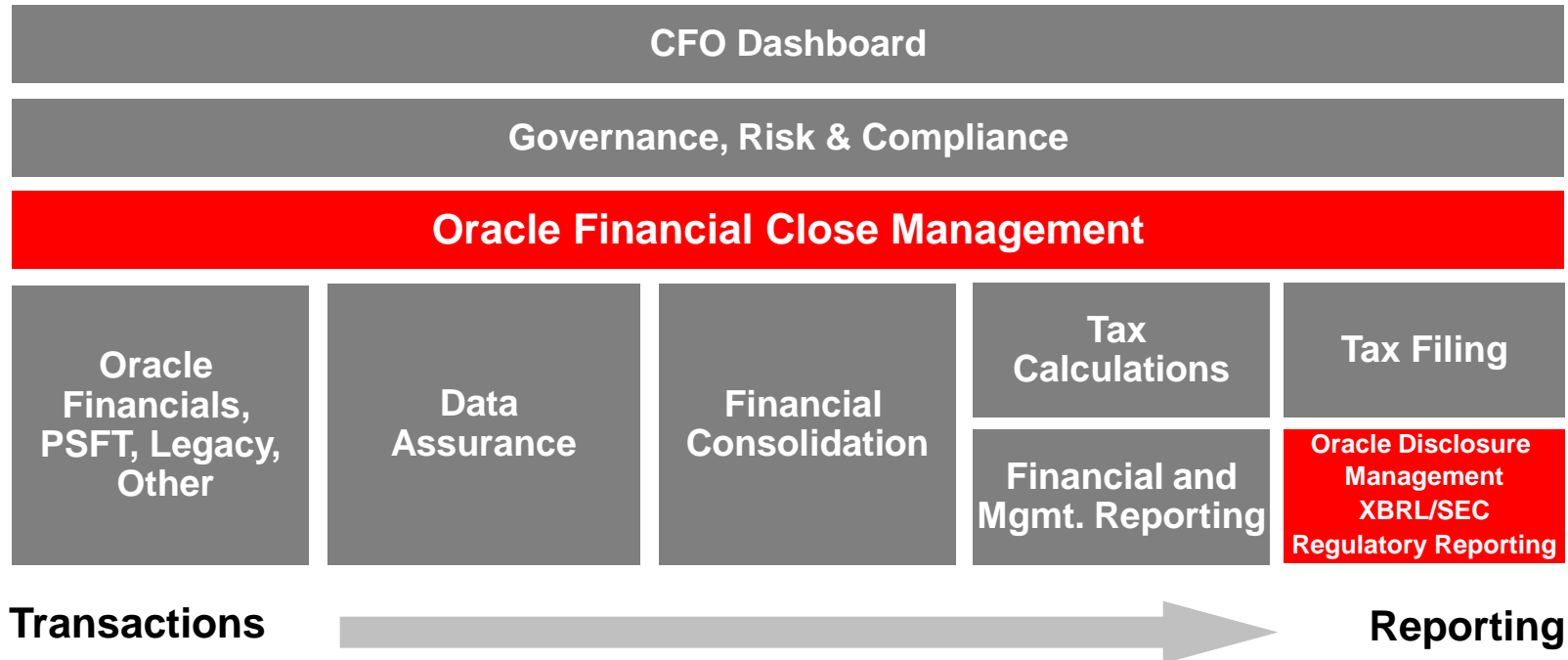
Document Management and Creation Challenges



DISCLOSURE MANAGEMENT

- Management and creation of critical documents is manual (Debt Covenants, 10Q/K, Board Package and Presentation, etc.)
- Gathering and managing commentary is manual
- Adjustment of financial data is manual
- MS Word documents sent to 3rd party who reformats and files with EDGAR
- MS Word files are converted to XBRL by 3rd parties or manually

Critical Components to Implement Financial Close Best Practices



Oracle Financial Close Management

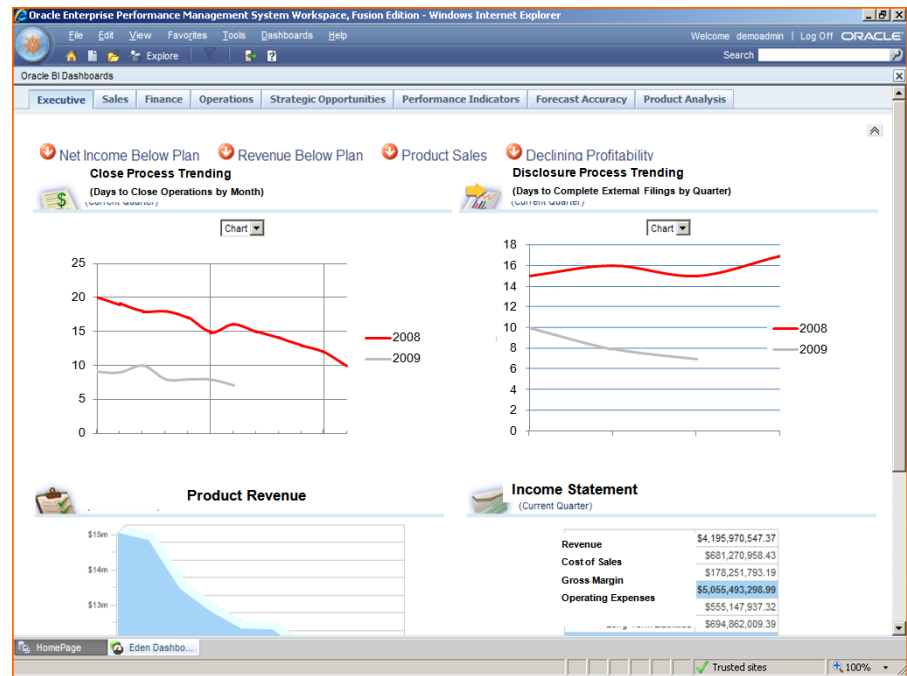
Feature Overview



Streamline the Extended Close Process with Financial Close Management

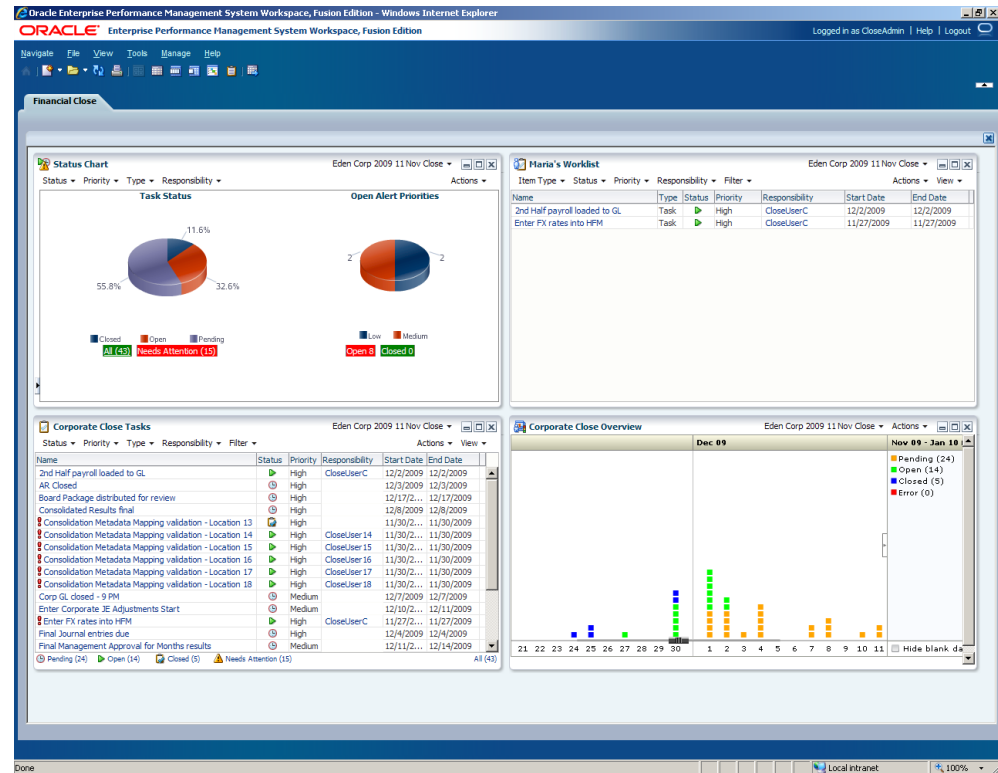
- Close Process Analysis, Trending and Improvement
- Process Monitoring
- Active Calendar
- Single Task List
- Automated workflow
- Ensure Compliance
- Email Notifications
- Account Reconciliations*

* *Planned Future Release*



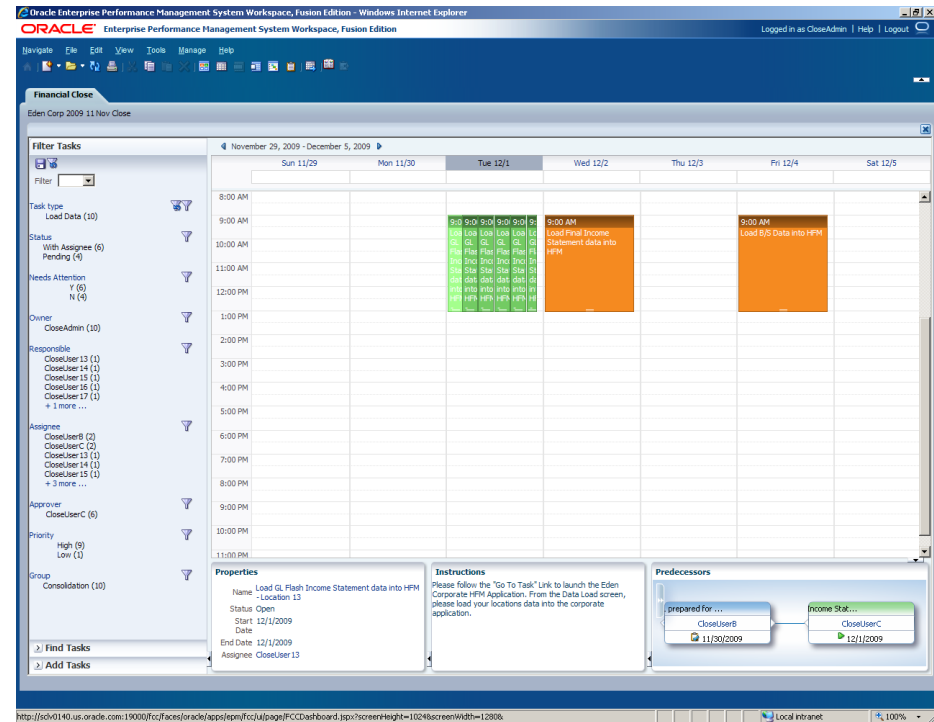
Process Monitoring

- Encourages continuous improvement to the close process
- Dashboards and ad-hoc reporting offers instant real time insight into the close processes
- Easily illustrates current process status
- Automatically updates status on process tasks
- Highlights which tasks are at risk or behind schedule



Active Financial Close Calendar

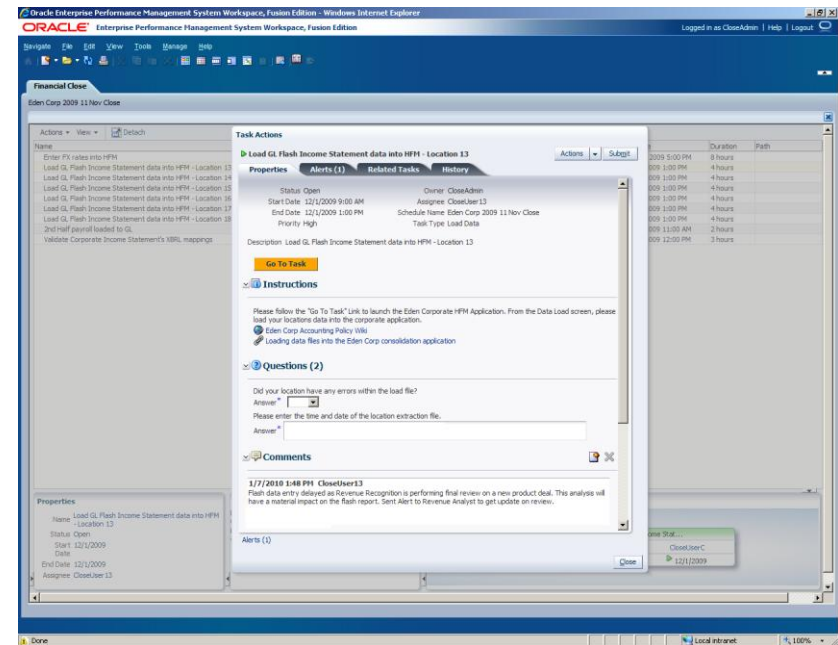
- Details all the tasks required for the financial close process
- Multiple views of close process flow
 - Calendar view
 - Tasklist view
 - Gantt view
- Customizable for each user



Calendar view

Task Management

- Support multiple task assignment types
 - Milestone tasks
 - Simple end user manual tasks
 - Integrates with EPM and ERP task assignments (i.e. AR sub ledger close to GL)
 - Complex system automation
- Supports task hierarchies, dependencies and grouping



Financial Close Management and PSFT, EBS...

- PeopleSoft integrations
 - FCM Release 11.1.2.1 and PSFT 9.0 and 9.1
 - Integration points from AP, AR, BI, AM and GL
 - Showcase activities in a period close
 - Activities of the following types
 - Automated : Can be executed from FCM for PeopleSoft process and automatic notification to FCM. For eg: Execute Depreciation Close
 - Hyperlink: Activities linked to task requiring user to navigate to PeopleSoft page. For eg: Prepare Manual Adjustments
 - External : Activities performed outside ERP. For eg: Signoff accounts reconciliation for Receivables
- EBS integrations
 - Coming in CY2011

Oracle Disclosure Management

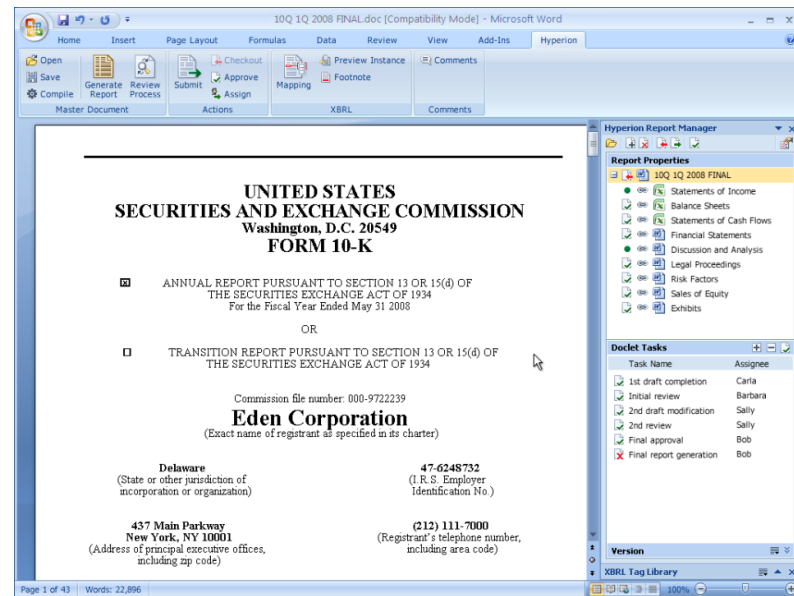
Feature Overview



Oracle Disclosure Management

- Simple end user experience leverages user's preferred document application - Microsoft Word & Excel
- Built-in, extensive XBRL reporting capabilities including full instance document creation and validation
- Supports multiple output formats
- Covers the entire process of taking a company's consolidated results and transforming them into specifically stylized statutory filings*
- Document creation process manages the entire distributed development of the statutory report*

* *Planned Future Release*



XBRL Functionality Summary

- Offers a complete XBRL creation and management solution
- XBRL Taxonomy management, editing and viewing
- Enterprise level XBRL mapping that consists of:
 - Report level mapping within MS Word / Excel, Smart View
 - ERP and other data sources can also be mapped within MS Office
 - Reusable data source metadata mapping within Oracle's Hyperion Financial Management, Planning and Essbase
- Instance document creation, validation and viewing
 - Combine multiple documents to generate a single XBRL instance document
- Centralized taxonomy concept mapping storage and management

Disclosure Management and PSFT, EBS...

General Ledger deployments can utilize Disclosure Management's XBRL capabilities by one of the following solutions:

- Direct Integration with MS Office using PeopleSoft nVision, BI Publisher or other MS Office reporting solutions.
- Generate EPM Applications (HFM, Planning, Essbase) from the General Ledger. Integration with EPM Apps via Smart View / Financial Reporting :
 - Financial Data Quality Management / ERP Integrator
 - Manually via metadata and data extracts.

Demo



